



SIGNAGE

PROPERTY SIGNAGE

When considering new property signage, POAH's properties will receive either **monument signage**, or **urban signage**. The installation of signage helps identify and brand each property as a POAH Community. The signs also provide information about fair housing, ADA offerings, and leasing websites. All properties need to abide by their local signage zoning ordinances and must receive a permit before any signage is installed.

- Monument Signage: the sign shall be purchased from Creative Sign Design and permitted + installed by a local sign company.
- Urban signs: a local sign installer shall permit, manufacture, and install the new signs.

MONUMENT SIGNAGE

Where: At non-urban properties, monument signs (freestanding signs) are typically installed at the property entrance, or in a significant location to brand the property as a POAH Community.

How: POAH has negotiated pricing with **Creative Sign Design (CSD)** of Florida to manufacture all new property signs. The project manager at each property is responsible for hiring a local sign installer to permit and install the sign. The following steps should be followed when purchasing and installing a new property sign.



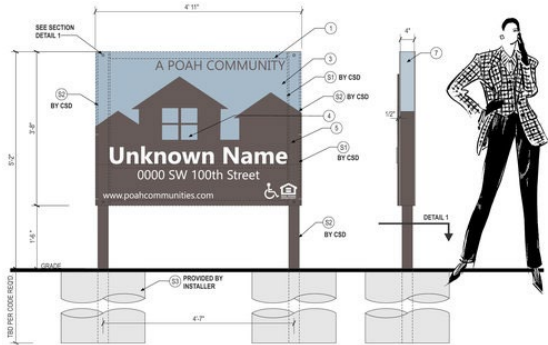
1. Download + review **Monument Signage PDF** (see button below).
2. Select desired sign type and position it on property.
3. Review selection and placement with Design + Building Performance Department.
4. Contact CSD, and contract with them for new sign(s).
 - <http://www.creativesigndesigns.com>
 - 830 S. Ronald Reagan Blvd.
Suite 232
Longwood, FL 3275
 - (800) 804-4809
5. CSD will produce a shop drawing to be used during permitting.
6. Send Request For Proposals to local sign companies for permitting and installation of new sign. Demolition of existing sign may need to be included in scope. Pricing will vary. Contract with selected local sign company.
7. Local sign company to submit CSD's shop drawing for permit at local zoning/planning department.
8. Local sign company to receive permit from municipality.
9. CSD to manufacture and ship new sign to local sign company.
10. Local Sign company to install new sign.

[DOWNLOAD THE MONUMENT SIGNAGE PDF HERE](#)



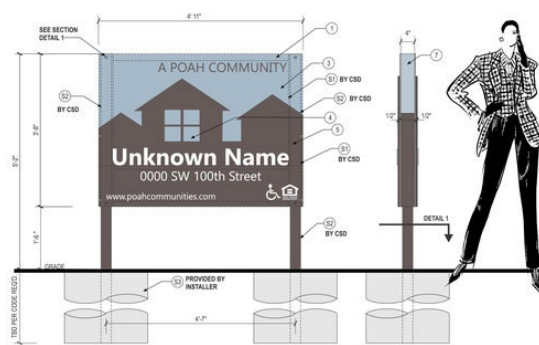
<https://www.poahbod.org/s/BOD-Signage-Monument-4wfk.pdf>

A1



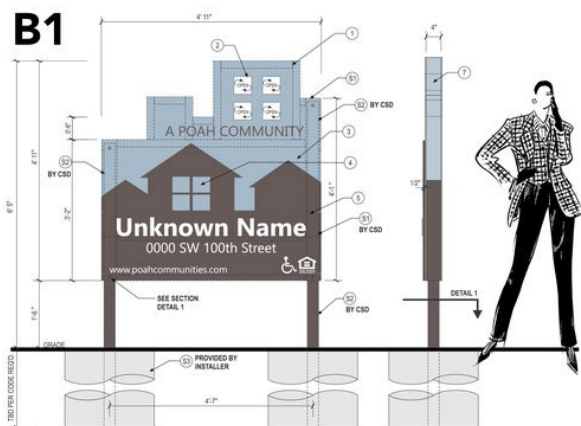
A1: Rectangular - 1 sided
Product only: \$2,133.20

A2



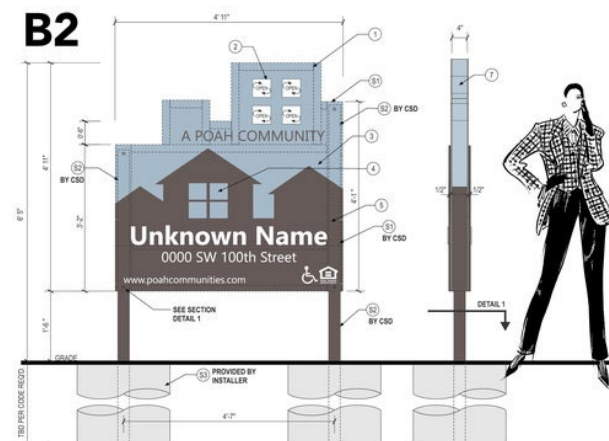
A2: Rectangular - 2 sided
Product only: \$2,616.50

B1



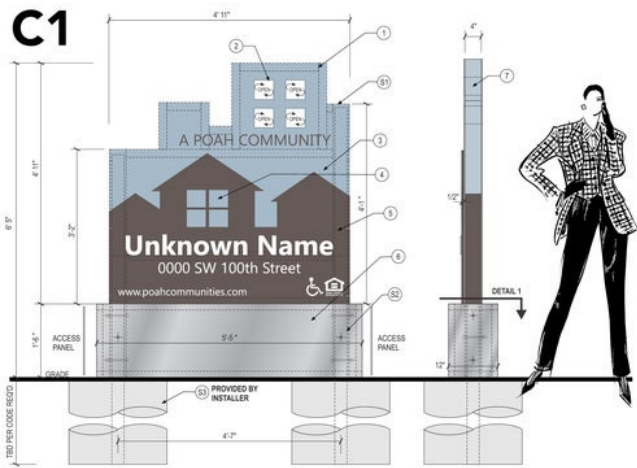
B1: Cutout - 1 sided
Product only: \$2,533.62

B2

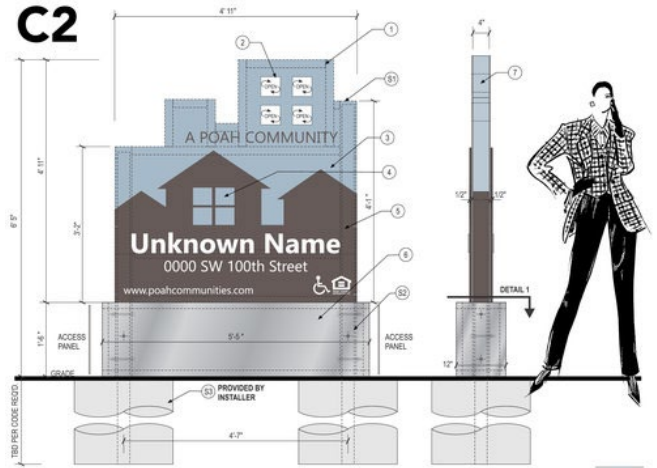


B2: Cutout - 2 sided
Product only: \$3,117.02

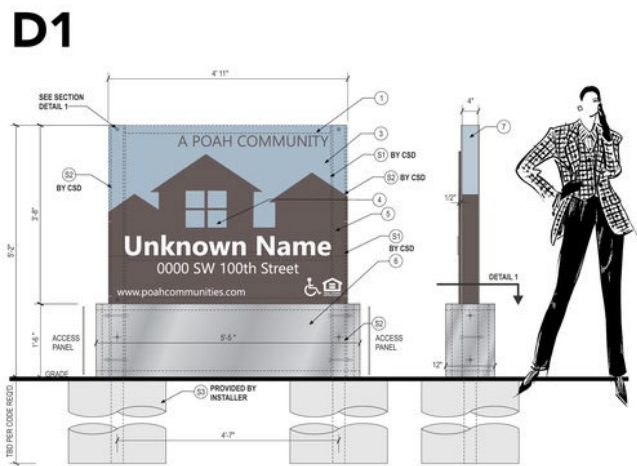
BASIS OF DESIGN



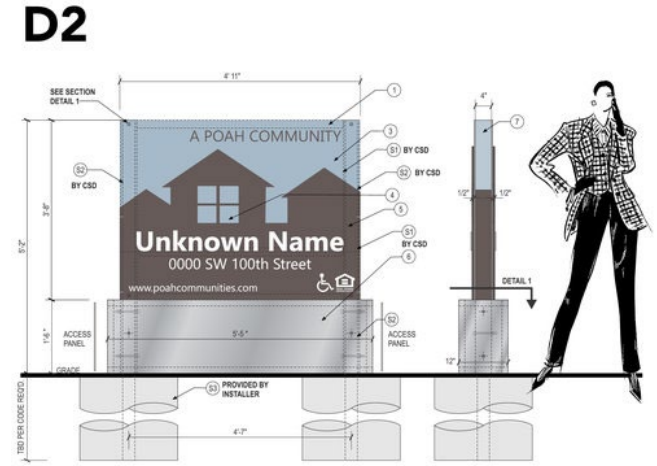
C1: Cutout - 1 sided with base
Product only: \$2,933.62



C2: Cutout - 2 sided with base
Product only: \$3,533.62



D1: Rectangular - 1 sided with base
Product only: \$2,733.20



D2: Rectangular - 2 sided with base
Product only: \$3,216.50



URBAN SIGNAGE

Not all properties are able to receive a new monument sign. Urban properties typically do not have space for a free-standing sign, or when they do have space, zoning regulations may not allow one to be installed. For these types of properties, a **local sign company** should provide a wall mounted sign.

1. Review potential urban sign locations and designs with Design + Building Performance Dept.
2. Send a Request For Proposal to local sign companies.
3. Select a local sign company and work with them to finalize a sign design.
 - All designs should incorporate the POAH logo, the property name, property address, ADA logo, www.poahcommunities.com, and the fair housing logo.
4. Local company should then submit design for permit.
5. Once the permit is received, the sign company will manufacture and install the new sign.
6. Local sign companies can also provide exterior wayfinding signage. POAH/POAHC fonts and colors should be used.





INTERIOR WAYFINDING

INCLUDES UNIT, MANAGEMENT, CODE REQUIRED, AND DIRECTIONAL SIGNAGE

Architect to identify all required signs, including those required by code, and provide a sign schedule. Using the **Interior Wayfinding Template** as a starting point, signage shall be tailored to the specifics of the property. The **project manager** should pick an accent color for the background of interior wayfinding signs.

INTERIOR WAYFINDING TEMPLATE

INTERIOR MULTILINGUAL WAYFINDING TEMPLATE

INTERIOR PICTOGRAM WAYFINDING TEMPLATE

INTERIOR MULTILINGUAL/PICTOGRAM WAYFINDING

TEMPLATE

