



PLUMBING

GENERAL INFORMATION & REQUIRED DETAILS:

- These products are chosen based on their ability to conserve water, and their availability at HD Supply Solutions.
-

AERATORS

GENERAL INFORMATION & REQUIRED DETAILS:

- Finish: Chrome or Stainless.
- Water Flow:
 - **Bathroom Faucets:** 0.5 gpm maximum.
 - **Kitchen Faucets:** 1.5 gpm maximum.
- Aerator to be flushed yearly or if resident complains of weak flow.
 - Aerators help control water usage, so it is important they are maintained.
 - Removal of aerator will result in higher water bills.

BATHROOM FAUCET AERATOR:



Neoperl

Low Flow Dual Thread Chrome

Aerator 1.2 GPM

Manufacturer Number:

24-98491



If residents are removing aerators, use the following vandal-proof aerator and key:



Neoperl

Dual Thread Vandal Proof
Faucet Aerator 1.0 GPM 6pk
Manufacturer Number:
24-88259



Neoperl

Vandal Proof Aerator Wrench
Manufacturer Number:
51-2097

KITCHEN FAUCET AERATOR:



Neoperl

Dual Thread Aerator 1.5 GPM
6pk
Manufacturer Number:
24-88252



BATHROOM FAUCETS

GENERAL INFORMATION & REQUIRED DETAILS:

- Finish: Chrome or Stainless.
- Water Flow: Maximum of 0.5 gpm.
- Aerator to be flushed yearly or if resident complains of weak flow.
 - Aerators help control water usage, so it is important they are maintained.
 - Removal of aerator will result in higher water bills.
- Single tap/ lever is preferred.
- Coordinate faucet selection with sink holes (No holes can be empty).
- Required: pop-up drain.
- Faucets in ADA units must be ADA compliant.
- Faucets in common bathrooms must be ADA compliant.

SAMPLE PRODUCTS (UNIT):



Cleveland Faucet Group

Single-Handle Bathroom Faucet

- 1.2 GPM
- Chrome
- Single Handle
- ADA Compliant

Manufacturer Number:

35-58447



Delta

Foundations 4" Centerset 2-Handle Bathroom Faucet

- 1.2 GPM @ 60 PSI
- Chrome
- Two Handle
- ADA Compliant

Manufacturer Number:

206503636



SAMPLE PRODUCT (COMMON):



Delta

Metering Faucet

- 0.5 GPM @ 60 PSI
- Chrome
- Single Handle
- ADA Compliant

Manufacturer Number:
87T105

KITCHEN FAUCETS

GENERAL INFORMATION & REQUIRED DETAILS:

- Finish: Chrome or Stainless.
- Water Flow: Maximum of 1.5 gpm.
- Aerator to be flushed yearly or if resident complains of weak flow.
 - Aerators help control water usage, so it is important they are maintained.
 - Removal of aerator will result in higher water bills.
- Single tap/ lever is preferred.
- Coordinate faucet selection with sink holes.
- Sprayers: Not permitted.
- Faucets in ADA units must be ADA compliant.
- Faucets in common bathrooms must be ADA compliant.



SAMPLE PRODUCTS (UNIT + COMMON):



Moen

Kitchen Faucet

- 1.5 GPM @ 60 PSI
- Chrome
- Single Handle
- ADA Compliant

Manufacturer Number:
24-76338



CFG

Cornerstone Kitchen Faucet

- 1.5 GPM @ 60 PSI
- Chrome
- Single Handle
- ADA Compliant

Manufacturer Number:
CA40512

TUB/SHOWER FIXTURES

GENERAL INFORMATION & REQUIRED DETAILS:

- Water Flow: Maximum of 1.5 gpm and Water Sense Certified.
- Finish: Chrome coating over brass.
- Diverter integral to shower valve.

SAMPLE PRODUCTS:



Niagara

Earth Showerhead

- 1.5 GPM @ 80 PSI
- Chrome

Manufacturer Number:
N2915CH



Symmons

Hand Shower

- 1.5 GPM @ 60 PSI
- Chrome
- Use in ADA Units and for reasonable accommodations.

Manufacturer Number:
512HSA-1.5



Symmons

Origins Temptrol Tub-Shower Trim with Valve

- Chrome

Manufacturer Number:
S-9600-P



HD ProPlus

Tub Spout

- Chrome

Manufacturer Number:
HDS424800



SAMPLE SHOWER VALVE REMODEL PLATES:



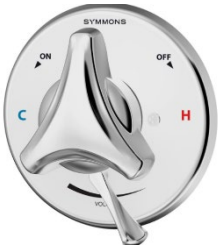
CFG

Tub-Shower Chrome Remodel
Cover Plate

- Chrome Finish
- Converts 2 & 3 Handle applications into a single handle.
- 13-1/4"L x 7-3/16"OD

Manufacturer Number:
40913

SAMPLE SHOWER TRIM REPLACEMENTS:



Symmons

Replacement Temptrol Trim

- Chrome

Manufacturer Number:
S-9600-P-TRM

TOILETS

GENERAL INFORMATION & REQUIRED DETAILS:

- Finish: White.
- Water Flow: Maximum of 0.86 GPF required.
- Comfort Height Toilets: Required.
- Two-Piece Toilets: Preferred.
- Bowl Type: Elongated Bowl Required.
 - For rehabs: Verify elongated bowl can fit within existing bathroom and maneuverability is not compromised.
- Note Rough-In Size and if **Rear/ Wall Discharge** vs. **Floor-Mounted** (Rehabs only).

SAMPLE PRODUCTS:



Niagara

Stealth Back Outlet

- Elongated Toilet Bowl
- ADA Compliant

Manufacturer Number:
N7799



Niagara

Stealth Floor Outlet

- Elongated Toilet Bowl
- ADA Compliant

Manufacturer Number:
N7717



Niagara

Stealth 0.8 GPF Toilet Tank

- 12" Rough-In
- Floor or Back Outlet

Manufacturer Number:
N7714T



Niagara (ADA)

Stealth ADA Button

- Use in ADA Units.

Manufacturer Number:
C7715-ADA

URINALS

GENERAL INFORMATION & REQUIRED DETAILS:

- Finish: White Porcelain.
- Water Flow: Maximum of 0.5 GPF required.
- Acceptable Manufacturers: American Standard, Toto, Kohler, Gerber, and Seasons.

SAMPLE PRODUCTS:



TOTO

Modern Urinal

- 0.125 GPF

Manufacturer Number:

UT105U



American Standard

Flushometer Valve Manual
Urinal

- 0.125 GPF

Manufacturer Number:

6045013.002

KITCHEN SINKS

GENERAL INFORMATION & REQUIRED DETAILS:

- Finish: Type 302, 18 gauge Stainless Steel.
- Bowl Number: Double Bowl Preferred.
- Depth: 8" for standard unit; Maximum of 6.5" in ADA units.
- Drain Size: 3.5" Minimum.
- Holes: 3 holes or less, no plugs permitted.
- Sprayers: Not permitted.
- Required Mounting Details: Self-rimming.



SAMPLE PRODUCTS:



Moen
33" x 22" Double Bowl Kitchen Sink

- Stainless Steel
- 3-Hole
- 8" Depth

Manufacturer Number:
G182133



Just Manufacturing
33" x 22" Double Bowl Kitchen Sink

- Stainless Steel
- 3-Hole
- 8" Depth

Manufacturer Number:
DL-1933-A-3



Dayton
25" x 22" Single Bowl Kitchen Sink

- Stainless Steel
- 3-Hole
- 8" Depth

Manufacturer Number:
DXR25223

GARBAGE DISPOSALS

GENERAL INFORMATION & REQUIRED DETAILS:

- **New Construction + Rehab:** garbage disposals are not permitted.
- **Property Management:** remove garbage disposals when they warrant repair or replacement.

WALL HUNG SINKS

GENERAL INFORMATION & REQUIRED DETAILS:

- Must be ADA compliant.
- Finish: White Porcelain.
- Size: 2 gallon min. capacity.
- Holes: 3 holes or less, no plugs permitted.
- Integral Wall Bracket Supports required with assembly.
- Insulation/padding required for exposed pipes.
- Pop-up drain required at unit bathroom sinks, but not in common area sinks.



- All sinks to have overflow drain.

SAMPLE PRODUCTS (UNIT + COMMON):



American Standard

Lucerne Wall Hung Lavatory Sink

- White China

Manufacturer Number:
0356.015



Gerber

Monticello II Wall Hung Lavatory Sink

- White China

Manufacturer Number:
G0012654

VANITY SINKS

GENERAL INFORMATION & REQUIRED DETAILS:

- Use solid surface vanity tops (sink integral with countertop).
- Width: 37" min or match existing.
- Holes: 3 holes or less, no plugs permitted.
- Pop-up drain required at bathroom sink.



PREFERRED PRODUCTS (UNIT):



Premier Vanity Tops

Solid White Cultured Marble
Vanity Top and Bowl

- 37"W x 22"D
- 4" Faucet Centers
- Integrated Backsplash
- Fits 36"W x 21"D
Bathroom Vanities

Manufacturer Number:
112007



Swanstone

Solid Surface Lavatory with
Integral Sink

- Color: Bisque (018) or
match existing.

EXAMPLE VANITY BASE CABINET:



Seasons

36"W x 32-1/2"H x 21"D White
Bath Vanity Base Cabinet

- 3/4" Solid Wood Face
Frame
- 1/2" Plywood
Construction

Manufacturer Number:
283759



BATHTUBS

GENERAL INFORMATION & REQUIRED DETAILS:

- Materials: White porcelain enameled steel tub.
- Size: 60" minimum length or match existing.
- Wall Surround: See Tub/Shower Surround Spec.

SAMPLE PRODUCTS:



Bootz

Aloha Bathtub

- Right Hand Drain
- Enameled Steel

Manufacturer Number:
011-2364-00



Bootz

Maui Bathtub

- Right Hand Drain
- Enameled Steel
- Deep Soaker

Manufacturer Number:
011-2340-00

APPROVED TUB RETROFIT PRODUCTS:

To be installed upon resident reasonable request.



Cleancut

Step-In Kit

- Converts Bathtub to Step-In Shower
- White
- Medium Width

Manufacturer Number:
S-W-M

ROLL-IN SHOWERS

GENERAL INFORMATION & REQUIRED DETAILS:

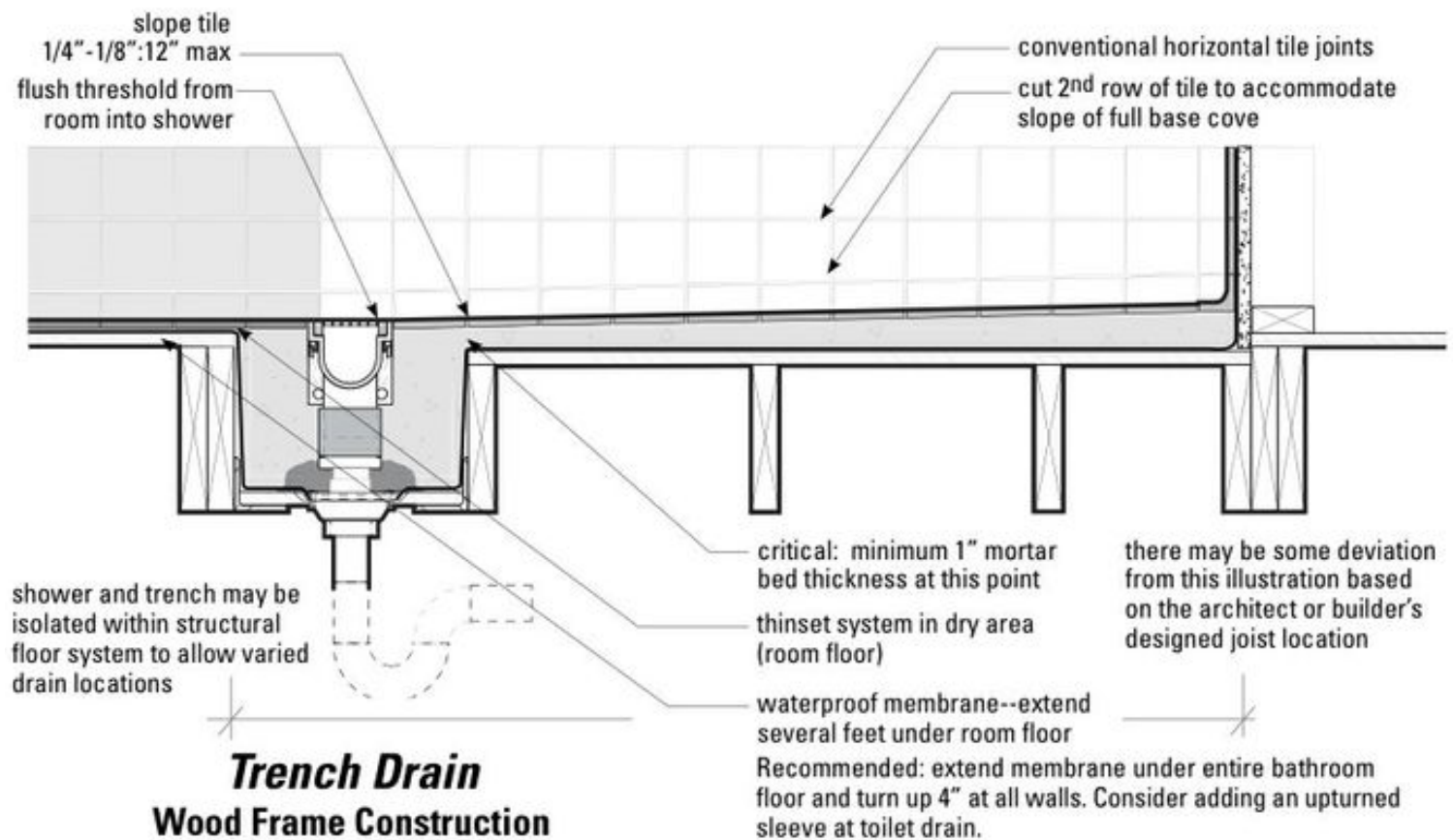
- Accessories: Folding shower seat and hand-held shower head.
- Trench Drain: Required at shower threshold.
- Wall Surround: See Tub/Shower Surround Spec.
- At senior properties where ADA units are being built (new construction) or rehabbed, as many bathrooms as possible should be converted to roll-in showers.

APPROVED PRODUCTS:

- Swanstone in Bisque (018).
- Porcelain 12"x12" tiles in natural or light color.



TRENCH DRAIN DETAIL:



SAMPLE WATER MANAGEMENT PRODUCTS:



At locations where a trench drain installation is not feasible, the follow products are recommended to keep water inside the shower. These collapsible water retainers keep water within the shower, but compress under a wheelchair or foot:



Swan

Collapsible Shower Floor Water
Barrier



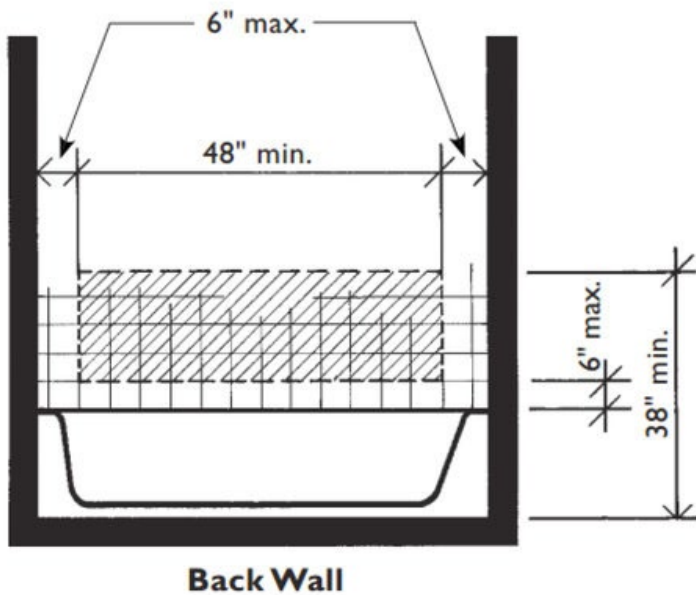
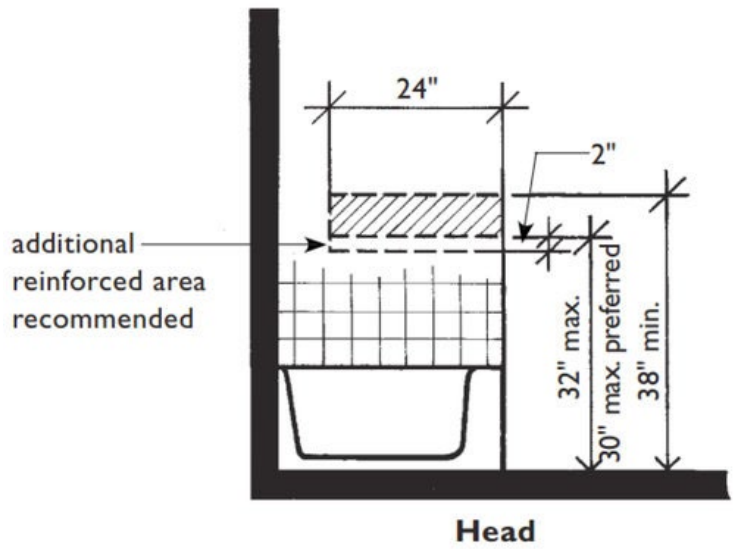
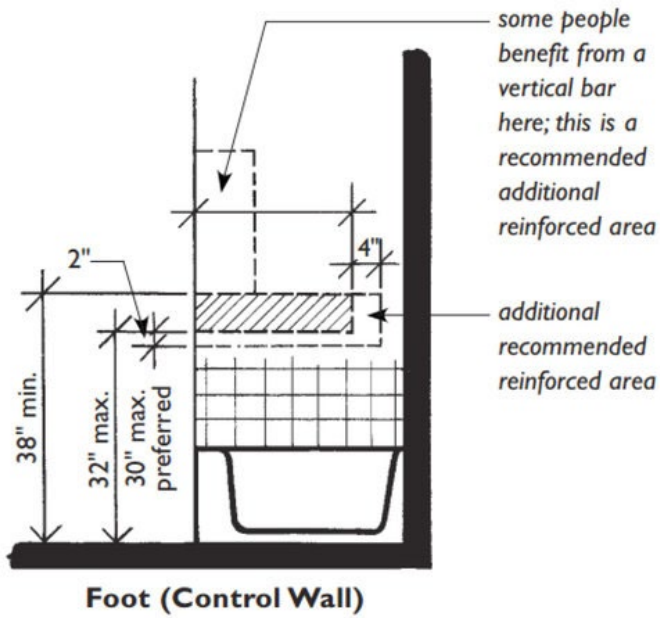
Best Bath Systems

Rubber WaterStopper Kit

TUB/SHOWER SURROUNDS

GENERAL INFORMATION & REQUIRED DETAILS:

- Wall Surround: Solid surface or tiled tub surround.
 - Acceptable manufacturers and finishes:
 - Swanstone in Bisque (018).
 - Porcelain Tile - white 12"x12" tiles.
- Required Details: One of the following details must be incorporated into the shower design to accommodate the introduction of grab bars or other reasonable accommodation requests in the future.
 - Install 3/4" plywood continuously on all shower walls between studs and waterproof backerboard.
 - or
 - According to the Fair Housing Act Design Manual, install blocking in the following locations:



SAMPLE PRODUCTS:



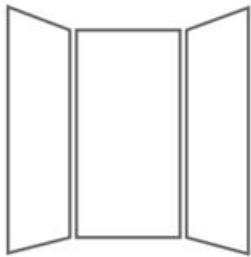
Swanstone

3-piece tub surround.

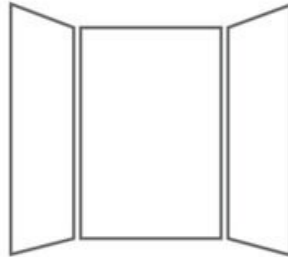
- Color: Bisque (018), or match existing



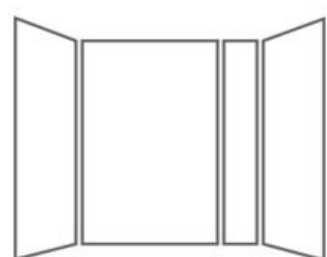
SAMPLE SHOWER KIT SIZES:



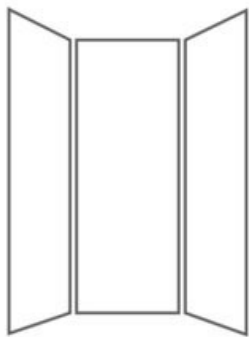
36"D x 36"W x 72"H kit
with 2 shelves



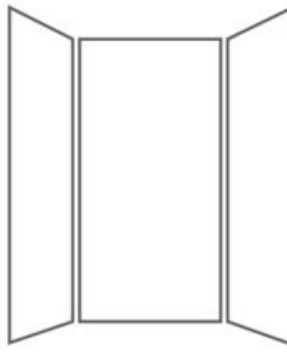
36"D x 48"W x 72"H kit
with 2 shelves



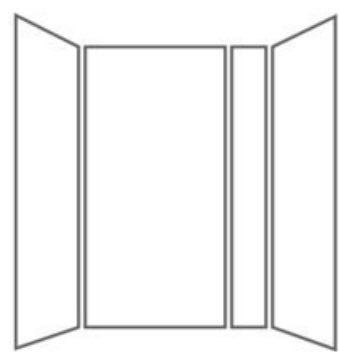
36"D x 60"W x 72"H with
11-3/4"W x 72"H overlap panel



36"D x 36"W x 96"H kit
with 2 shelves



36"D x 48"W x 96"H kit
with 2 shelves



36"D x 60"W x 96"H with
11-3/4"W x 96"H overlap panel