

# CABINETY

## GENERAL INFORMATION & REQUIRED DETAILS:

- All cabinetry to be plywood construction (no particleboard).
- 180 degree hinges, wrap hinge.
- No blind corners:
- All space below the corner of a kitchen countertop must be accessible from either of the adjacent cabinets, or by a special corner cabinet door.
- No drawers larger than 18".
- KCMA certification preferred.
- Hardware (pull) to be included in all cabinetry.
- The cabinetry products in this section are shown as reference. Other cabinetry products that meet the requirements of the spec may be used.
- **Seal with foam all plumbing and electrical penetrations behind cabinetry.**

## BOX CONSTRUCTION REQUIRED DETAILS:

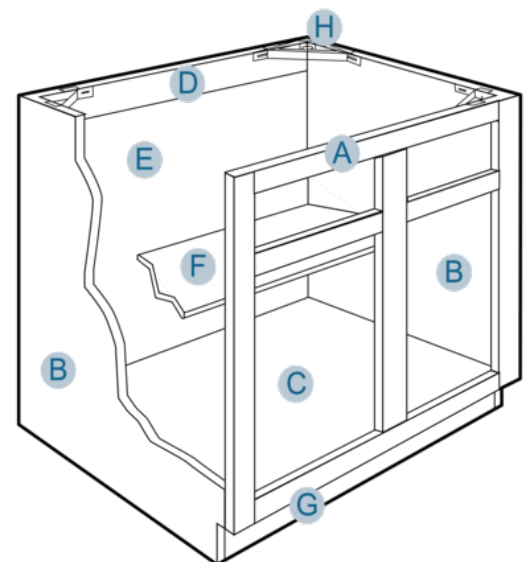
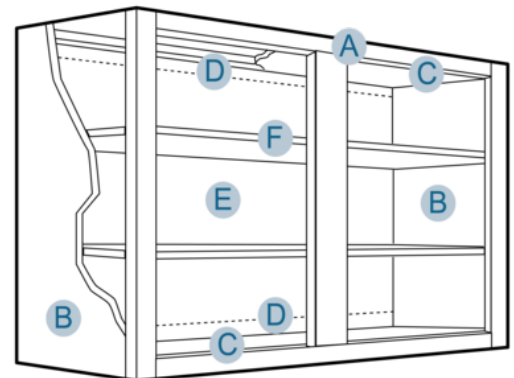
**A) FRONT FRAME:** 3/4" solid hardwood or thermo-foil vinyl wrapped solid finger jointed lumber or LVL linear veneer lumber Bore and dowel/pocket screw construction frame joinery reinforced with glue/nails. Stiles 1 1/2" wide. Mulls 3" wide. Rails 1 3/4" wide. Stile and top and bottom rails dadoed to receive ends, tops, and bottoms.

**B) END PANELS:** Standard: Nominal 1/2" thick multi-ply birch veneer plywood dadoed to receive tops and bottoms, with wood grained or laminate on interior/exterior surfaces. All end panels are inserted into dado in face frame and recessed 3/16".

**C) TOP/BOTTOM PANELS:** 1/2" thick multi-ply hardwood plywood. Tops and bottoms are set into grooved end panels and front rails glued and stapled. Bottoms are supported by 1/2" thick wood base composite panel.

**D) HANGING RAILS:** Wall cabinets have 1/2" thick x 2 7/8" multi-ply plywood hanging rail, running full cabinet width at top and bottom. Base cabinets have 1/2" thick x 2 7/8" wood based composite panel hanging rail running full cabinet width at top. Hanging rails are captured between end panels recessed behind.

**E) BACK PANEL:** 1/8" thick hardwood plywood Securely glued/stapled to end panels and hang rails. Back panels are fully captured on wall cabinets.





**F) SHELVES:** 5/8" thick multi-ply hardwood plywood, with hardwood veneer banded front edge. Shelves are adjustable in all standard wall and base cabinets.

**G) TOE KICK:** 4" high and recessed 3 3/8".1/2" thick unfinished wood based composite panel captured between end panels. Finish should be covered with infill panel to match finish.

**H) BASE CORNER BRACES:** High impact, injection molded plastic.

**I) DRAWERS:** Nominal 1/2" thick multi-ply hardwood front, back, and sides. Drawer bottoms are nominal 1/4" thick multi-ply hardwood inserted into dado in front back and sides. All drawer parts glued and stapled together.

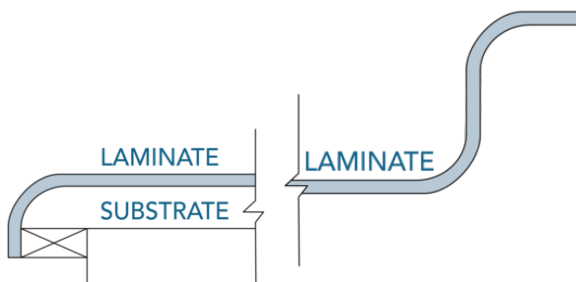
**J) DRAWER GUIDES:** High-quality epoxy coated steel, Cushion-Tec, side mounted guides, self-adjusting in mounting brackets. Built-in stop, self-closing and stay-closed features with a 100 lb. rated load capacity.

## COUNTERTOP REQUIRED DETAILS:

### PLASTIC LAMINATE (KITCHEN ONLY):

- Suggested Laminate Manufacturers: Wilsonart or Formica.
- NEMA LD 3 compliant, HGP Grade, and minimum 1.0mm thickness.
- **Countertop Construction:**
  - Post form (continuous, no visible joints).
  - Front Edge - Continuous, Double Round Over, 1 3/8" high (See Section Below).
  - Backsplash - Continuous one piece raises up wall with 1 1/8" return to wall (See Section Below).
  - Side splash - square edged loose, installed between wall and counter, height to match back splash height.
  - Substrate: Comply with ASTM D 1037.
    - At Sink: Exterior grade plywood or phenolic resin.
    - Particleboard: Compliance with ANSI A208.1 (Grade M-2 exterior glue), 45-lb density and minimum 3/4" thick.
    - MDF: Compliance with ANSI A208.2 and minimum 3/4" thick.
  - Provide BK-20 Backer Sheet if unsupported countertop area.

### GRAPHIC OF POST FORM COUNTERTOP:



### SOLID SURFACE/ VANITY TOP WITH INTEGRAL SINK (BATHROOMS ONLY):

- Suggested Manufacturers: Swanstone.



- Coordinate size with cabinetry manufacturer.
- Coordinate product with faucet. No open holes or plugs to be used.
- 2 gallon bowl capacity.

## DOOR REQUIREMENTS:

- Family properties: 3/4" thick solid wood door frames and drawer fronts.
- Senior Properties: MDF center panels acceptable.
- Standard reveal doors and drawer fronts.

## SAMPLE DOOR PRODUCTS:

The cabinetry products in this section are shown as reference. Other cabinetry products that meet the requirements of the spec may be used.



- 3/4" Thick solid birch door frames and drawer fronts.
- Veneered MDF recessed flat center panel.
- Assembled with five-piece mortise and tenon joinery.
- Square design for all cabinets; offered with slab drawer heads.
- Standard reveal doors and drawer fronts.
- Eased edge profile on outside door frame.



- 3/4" Thick plantation hardwood door frames and drawer fronts.
- Solid routed raised panel.
- Square design for all cabinets; offered with slab drawer heads.
- Standard reveal doors and drawer fronts.
- Double rolled edge on outer and inner door profile.



- 3/4" thick solid birch door frames and drawer fronts.
- Genuine birch wood veneer flat center panel.
- Square design for all cabinets; offered with slab drawer heads.
- Assembled with five-piece mortise and tenon joinery.
- Standard reveal doors and drawer fronts.
- Double rolled edge on outer and inner door profile.



## ADDITIONAL INFORMATION

### VOCAB

