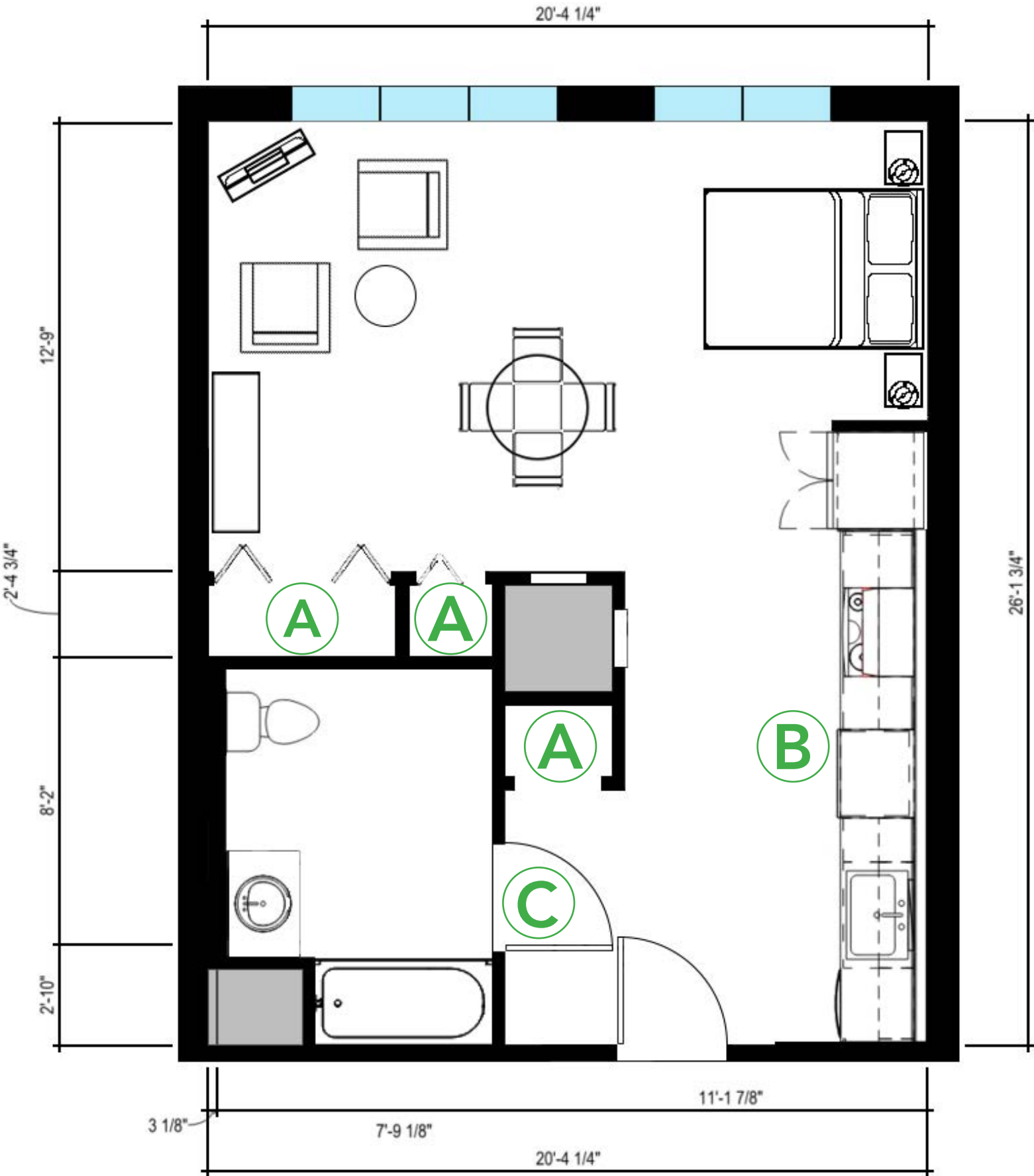


# Sample Studio Floor Plan - Typical Layout

Approx. 493 sqft (including closets)

This is a sample plan only. While there are elements we recommend incorporating into your design(s), POAH does not want this exact floor plan be used/duplicated in new construction projects. All square footages are approximate.

Floor Plan from POAH's Columbia Crossing in Boston, MA



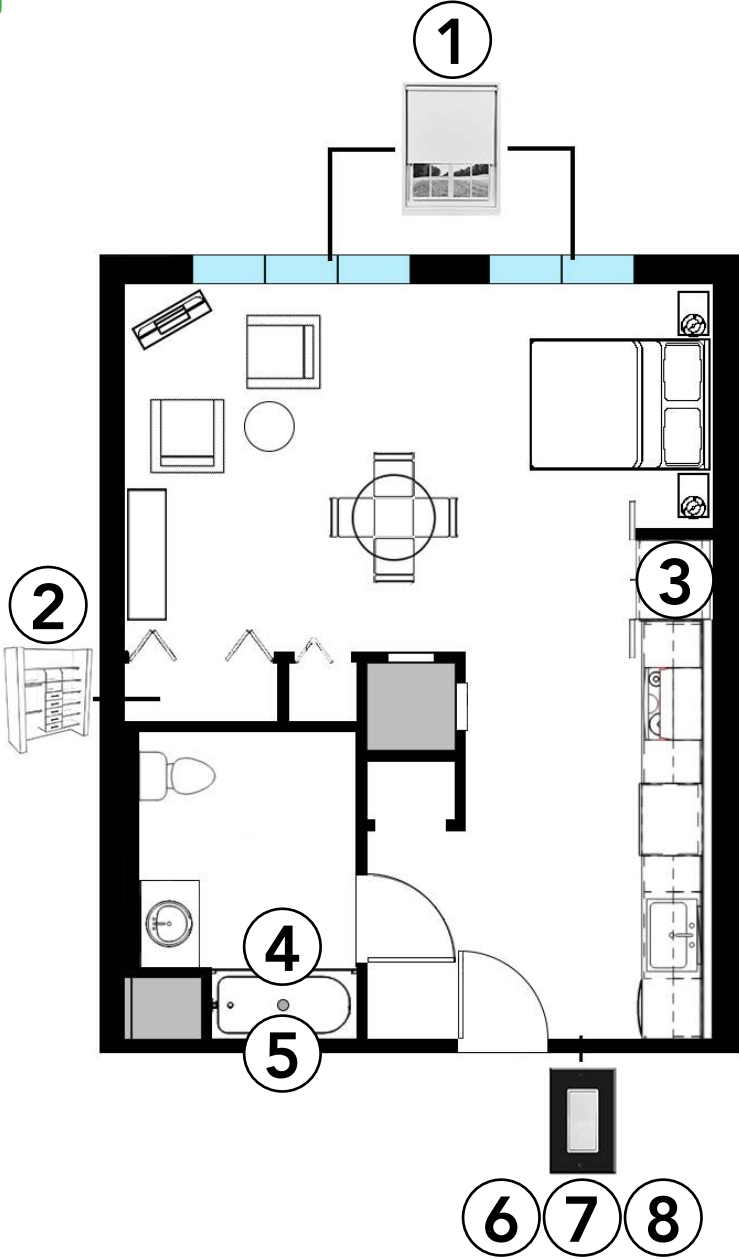
## What Works:

- A. There are (3) storage closets (3+ preferred by POAH).
- B. The kitchen is a galley, which allows multiple people to easily work together and open appliances without impeding entry into the kitchen area.
- C. The bathroom door swings out, providing more space within the room.

## POAH's Human-Centered Design Criteria:

1. **Choice:** Bedroom(s) and living room have adjustable curtains, blinds, or window shades.
2. **Inclusive Design:** In closets, there are storage/shelving options at varying heights.
3. **Inclusive Design:** Refrigerators are positioned such that door(s) can swing open 180 degrees.
4. **Comfort:** Bathroom shower curtain rods are curved to create a more spacious feel.
5. **Lighting:** In the bathroom, there is a light above or directly adjacent to the bath/shower to avoid dimness after closing the shower curtain.
6. **Choice:** Bedroom(s) and living room have dimmable or adjustable lighting.
7. **Visibility:** The color of the light switch plates and/or door frames contrasts with the surrounding wall.
8. **Lighting:** All artificial lighting has a color rendering index (CRI) of at least 90 CRI in senior properties and 80 CRI in all other properties.

9. **Connection to Nature:** Natural materials or materials that evoke nature are used within the design (ex. wood finishes, stone, etc.) (Not Shown in This Plan).

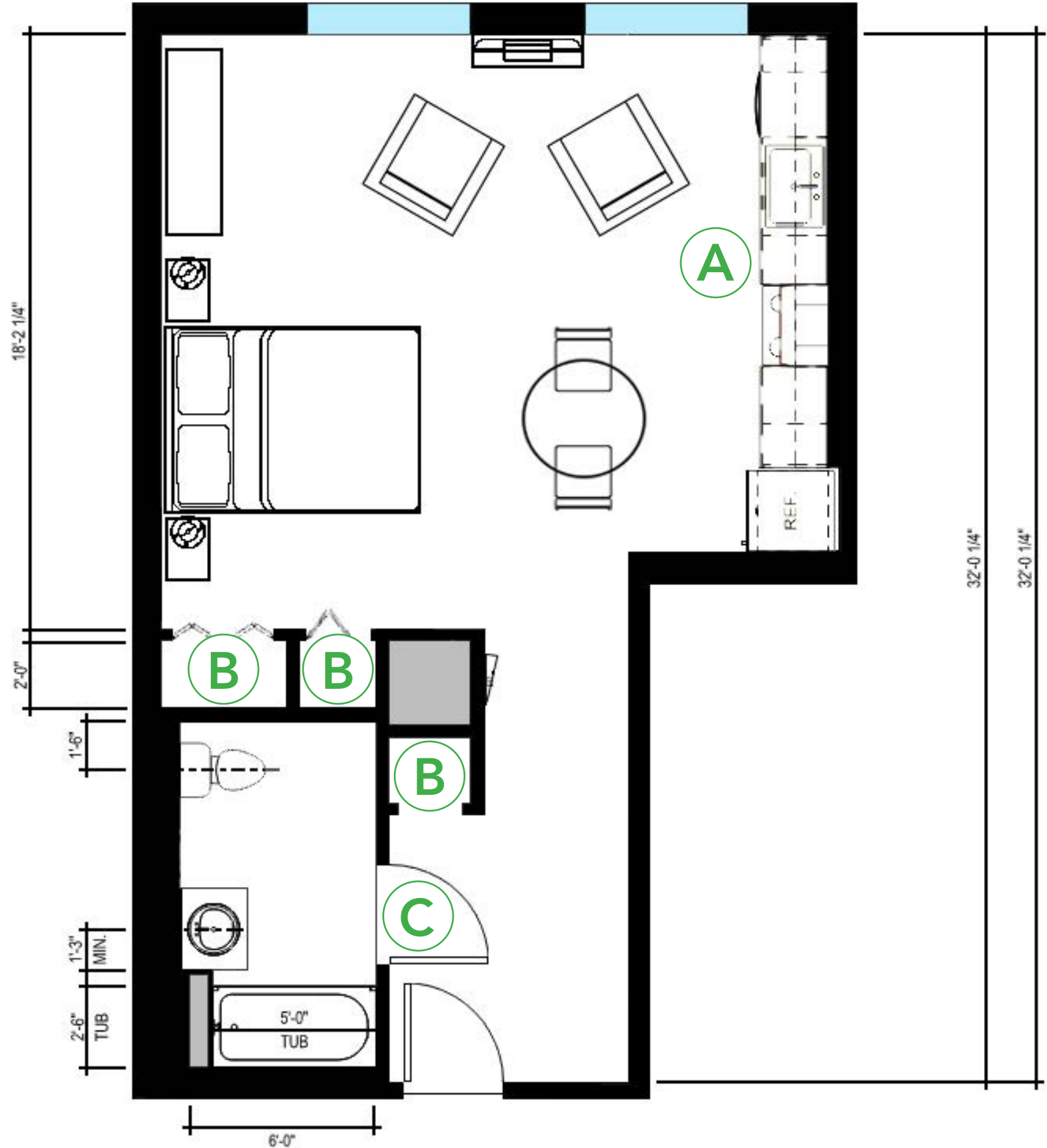


# Sample Studio Floor Plan - Atypical Layout

Approx. 519 sqft (including closets)

This is a sample plan only. While there are elements we recommend incorporating into your design(s), POAH does not want this exact floor plan be used/duplicated in new construction projects. All square footages are approximate.

Floor Plan from POAH's Columbia Crossing in Boston, MA

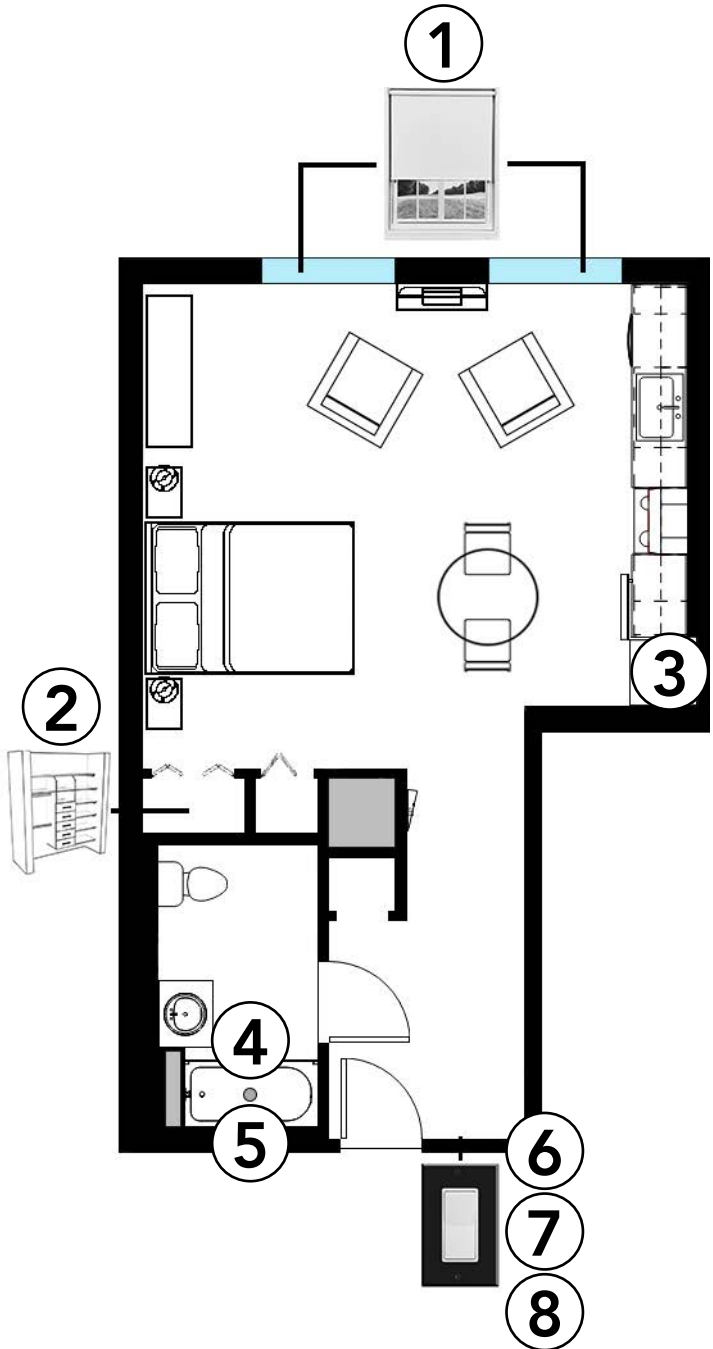


### What Works:

- A. The kitchen is a galley, which allows multiple people to easily work together and open appliances without impeding entry into the kitchen area.
- B. There are (3) storage closets (3+ preferred by POAH).
- C. The bathroom door swings out, providing more space within the room.

### POAH's Human-Centered Design Criteria:

1. **Choice:** Bedroom(s) and living room have adjustable curtains, blinds, or window shades.
2. **Inclusive Design:** In closets, there are storage/shelving options at varying heights.
3. **Inclusive Design:** Refrigerators are positioned such that door(s) can swing open 180 degrees.
4. **Comfort:** Bathroom shower curtain rods are curved to create a more spacious feel.
5. **Lighting:** In the bathroom, there is a light above or directly adjacent to the bath/shower to avoid dimness after closing the shower curtain.
6. **Choice:** Bedroom(s) and living room have dimmable or adjustable lighting.
7. **Visibility:** The color of the light switch plates and/or door frames contrasts with the surrounding wall.
8. **Lighting:** All artificial lighting has a color rendering index (CRI) of at least 90 CRI in senior properties and 80 CRI in all other properties.
9. **Connection to Nature:** Natural materials or materials that evoke nature are used within the design (ex. wood finishes, stone, etc.) (Not Shown in This Plan).

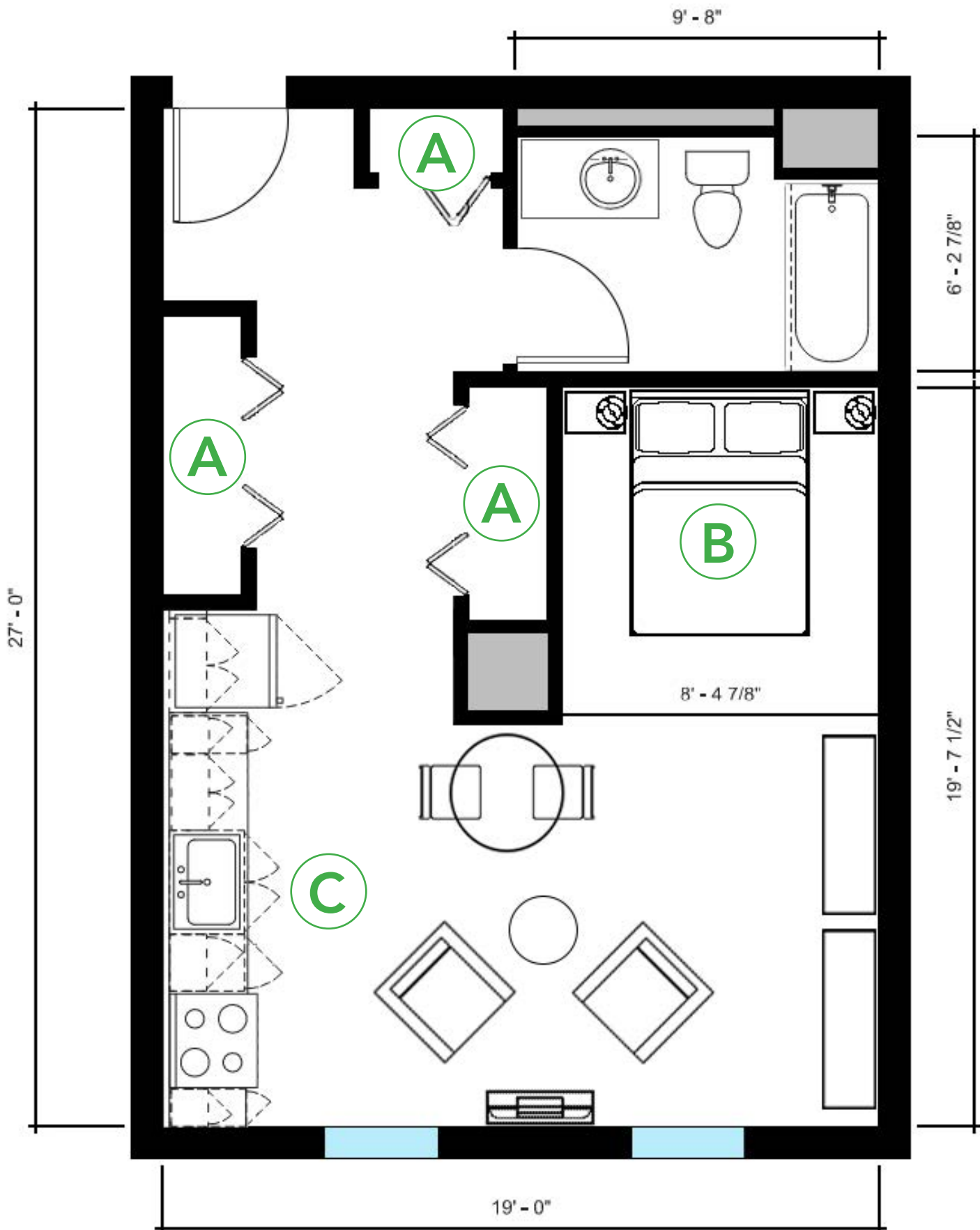


# Sample Studio Floor Plan - Atypical Layout with Sleeping Area

Approx. 479 sqft (including closets)

This is a sample plan only. While there are elements we recommend incorporating into your design(s), POAH does not want this exact floor plan be used/duplicated in new construction projects. All square footages are approximate.

Floor Plan from POAH's Flat 9 at Whittier in Boston, MA

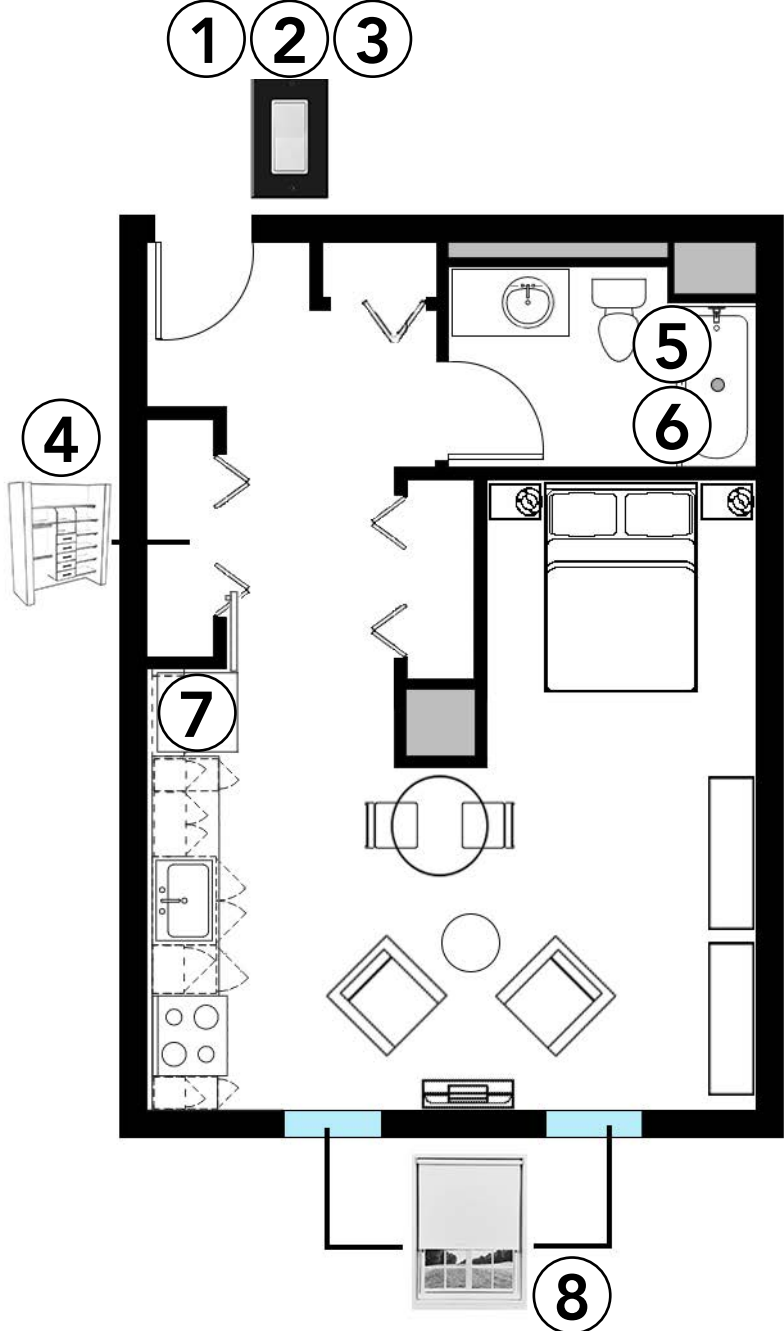


### What Works:

- A. There are (3) storage closets (3+ preferred by POAH).
- B. The sleeping area is secluded and provides enhanced resident privacy.
- C. The kitchen is a galley, which allows multiple people to easily work together and open appliances without impeding entry into the kitchen area.

### POAH's Human-Centered Design Criteria:

- Choice:** Bedroom(s) and living room have dimmable or adjustable lighting.
- Visibility:** The color of the light switch plates and/or door frames contrasts with the surrounding wall.
- Lighting:** All artificial lighting has a color rendering index (CRI) of at least 90 CRI in senior properties and 80 CRI in all other properties.
- Inclusive Design:** In closets, there are storage/shelving options at varying heights.
- Comfort:** Bathroom shower curtain rods are curved to create a more spacious feel.
- Lighting:** In the bathroom, there is a light above or directly adjacent to the bath/shower to avoid dimness after closing the shower curtain.
- Inclusive Design:** Refrigerators are positioned such that door(s) can swing open 180 degrees.
- Choice:** Bedroom(s) and living room have adjustable curtains, blinds, or window shades.
- Connection to Nature:** Natural materials or materials that evoke nature are used within the design (ex. wood finishes, stone, etc.) (Not Shown in This Plan).



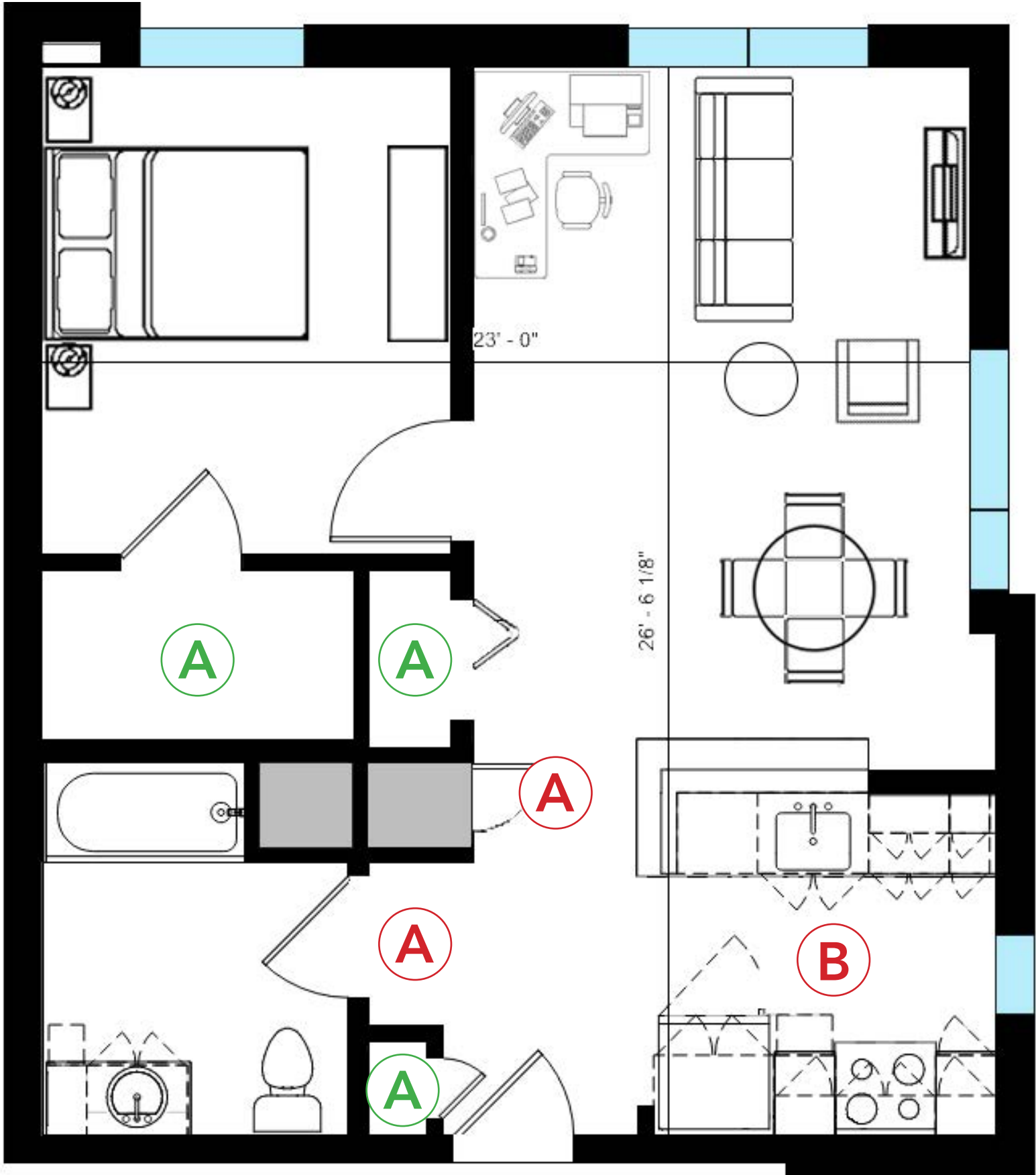


# Sample 1 Bed Floor Plan - Typical Layout

This is a sample plan only. While there are elements we recommend incorporating into your design(s), POAH does not want this exact floor plan be used/duplicated in new construction projects. **All square footages are approximate.**

Floor Plan from POAH's *The Loop at Mattapan Station in Boston, MA*

*Approx. 579 sqft (including closets)*



### What Works:

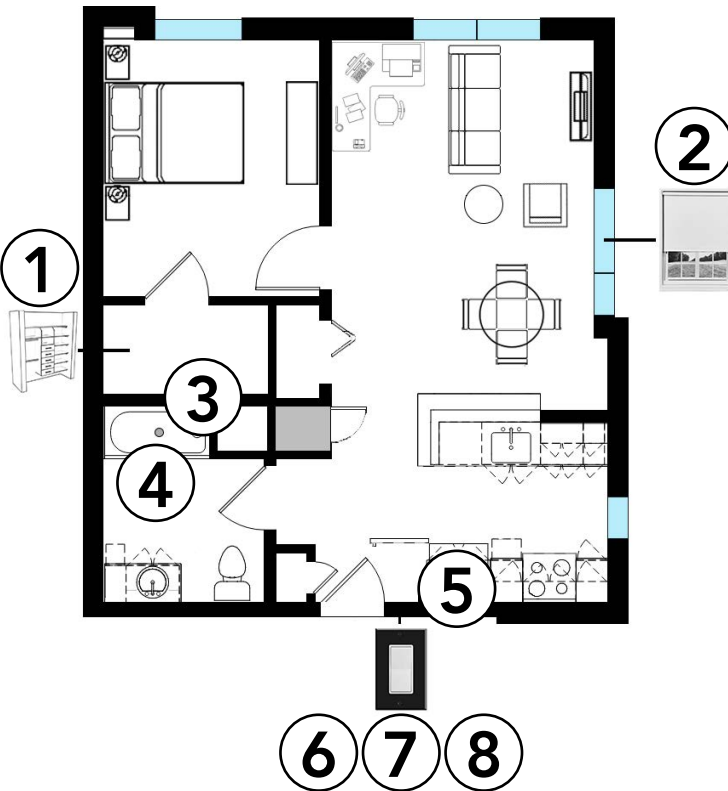
A. There are (3) storage closets (3+ preferred by POAH).

### What Does Not Work:

A. The corridors throughout the unit are not 60" minimum in width (preferred by POAH).  
 B. The kitchen is a U-Shape, which does not allow multiple people to easily work together. Additionally, opening appliance doors may impede entry into the kitchen.  
*Possible Solution: Provide an L-Shape kitchen instead.*

### POAH's Human-Centered Design Criteria:

1. **Inclusive Design:** In closets, there are storage/shelving options at varying heights.
2. **Choice:** Bedroom(s) and living room have adjustable curtains, blinds, or window shades.
3. **Comfort:** Bathroom shower curtain rods are curved to create a more spacious feel.
4. **Lighting:** In the bathroom, there is a light above or directly adjacent to the bath/shower to avoid dimness after closing the shower curtain.
5. **Inclusive Design:** Refrigerators are positioned such that door(s) can swing open 180 degrees.
6. **Choice:** Bedroom(s) and living room have dimmable or adjustable lighting.
7. **Visibility:** The color of the light switch plates and/or door frames contrasts with the surrounding wall.
8. **Lighting:** All artificial lighting has a color rendering index (CRI) of at least 90 CRI in senior properties and 80 CRI in all other properties.
9. **Connection to Nature:** Natural materials or materials that evoke nature are used within the design (ex. wood finishes, stone, etc.) (Not Shown in This Plan).

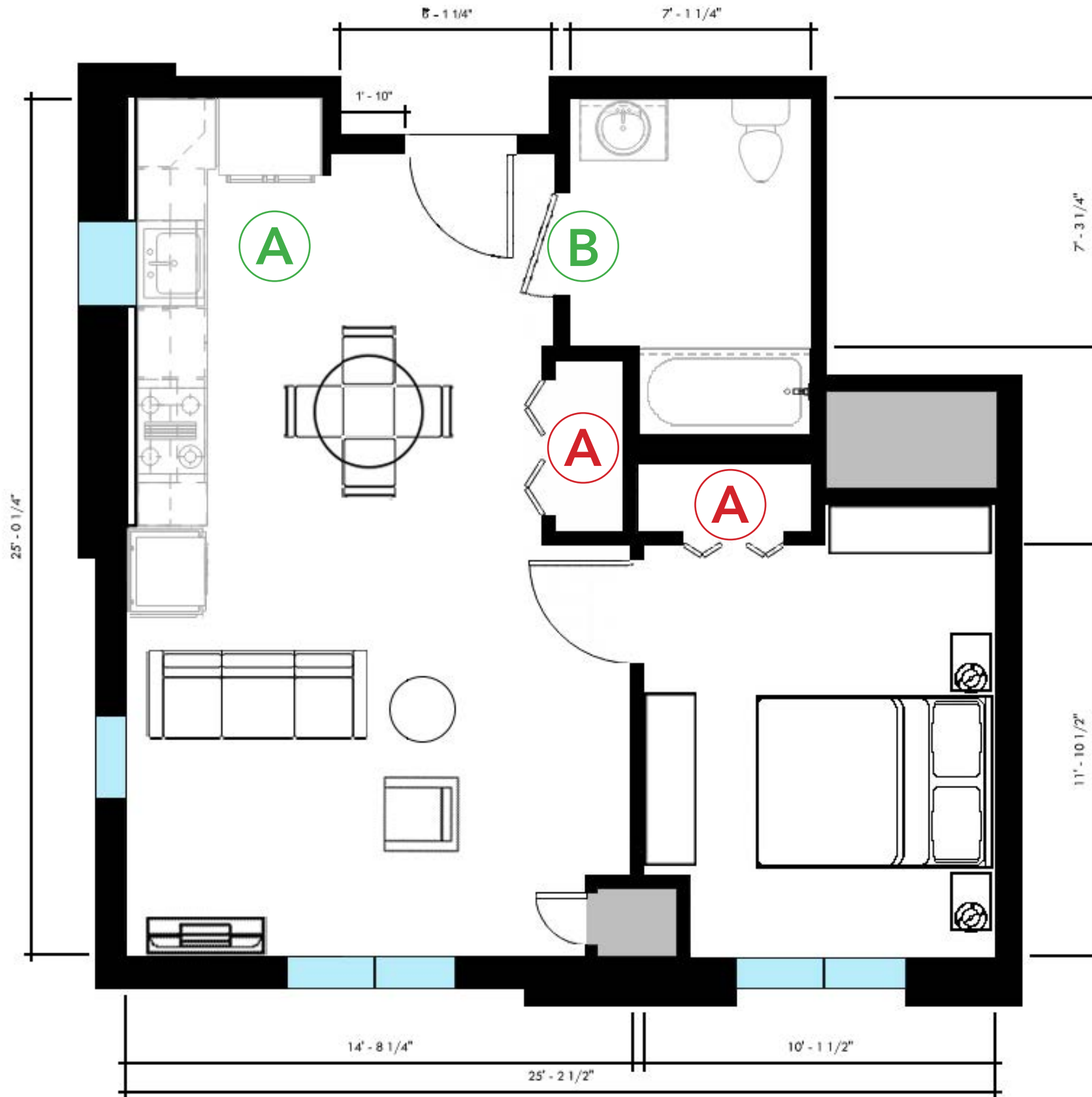


# Sample 1 Bed Floor Plan - Typical Layout

Approx. 536 sqft (including closets)

This is a sample plan only. While there are elements we recommend incorporating into your design(s), POAH does not want this exact floor plan be used/duplicated in new construction projects. All square footages are approximate.

Floor Plan from POAH's The Kenzi at Bartlett Station in Boston, MA



## What Works:

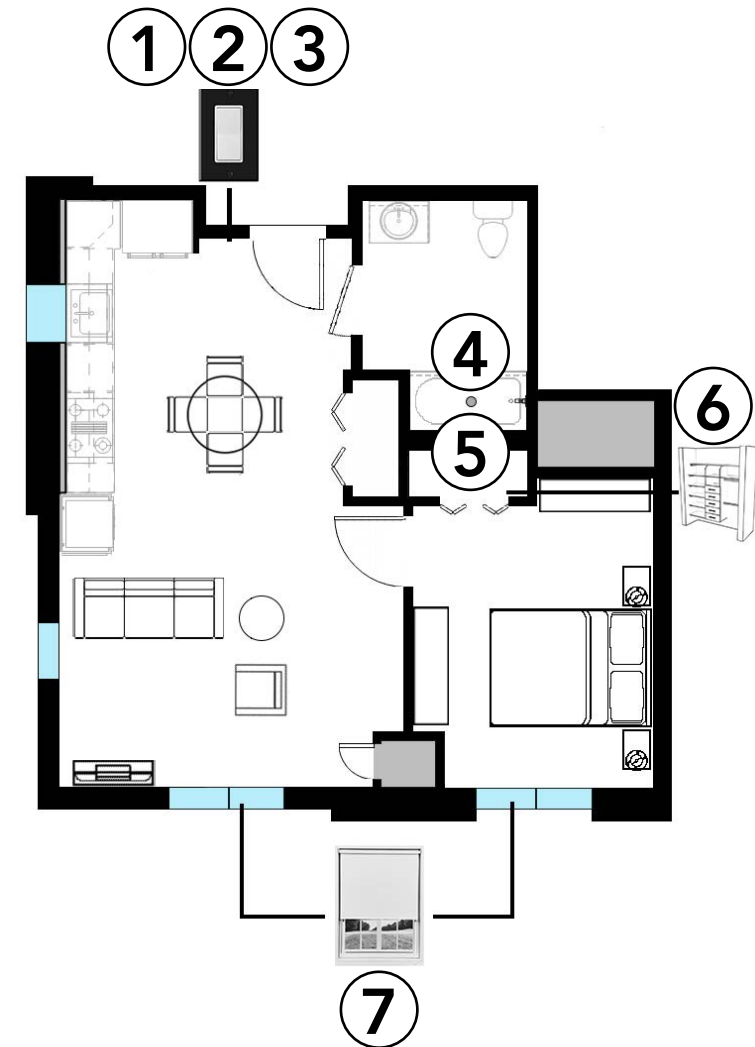
- A. The kitchen is an L-shape, which allows multiple people to easily work together and open appliances without impeding entry into the kitchen area.
- B. The bathroom door swings out, providing more space within the room.

## What Does Not Work:

- A. There are only (2) storage closets (3+ preferred by POAH). Possible Solution: A pantry closet could be added.

## POAH's Human-Centered Design Criteria:

1. **Choice:** Bedroom(s) and living room have dimmable or adjustable lighting.
2. **Visibility:** The color of the light switch plates and/or door frames contrasts with the surrounding wall.
3. **Lighting:** All artificial lighting has a color rendering index (CRI) of at least 90 CRI in senior properties and 80 CRI in all other properties.
4. **Comfort:** Bathroom shower curtain rods are curved to create a more spacious feel.
5. **Lighting:** In the bathroom, there is a light above or directly adjacent to the bath/shower to avoid dimness after closing the shower curtain.
6. **Inclusive Design:** In closets, there are storage/shelving options at varying heights.
7. **Choice:** Bedroom(s) and living room have adjustable curtains, blinds, or window shades.
8. **Inclusive Design:** Refrigerators are positioned such that door(s) can swing open 180 degrees (Not Provided in This Plan).
9. **Connection to Nature:** Natural materials or materials that evoke nature are used within the design (ex. wood finishes, stone, etc.) (Not Shown in This Plan).

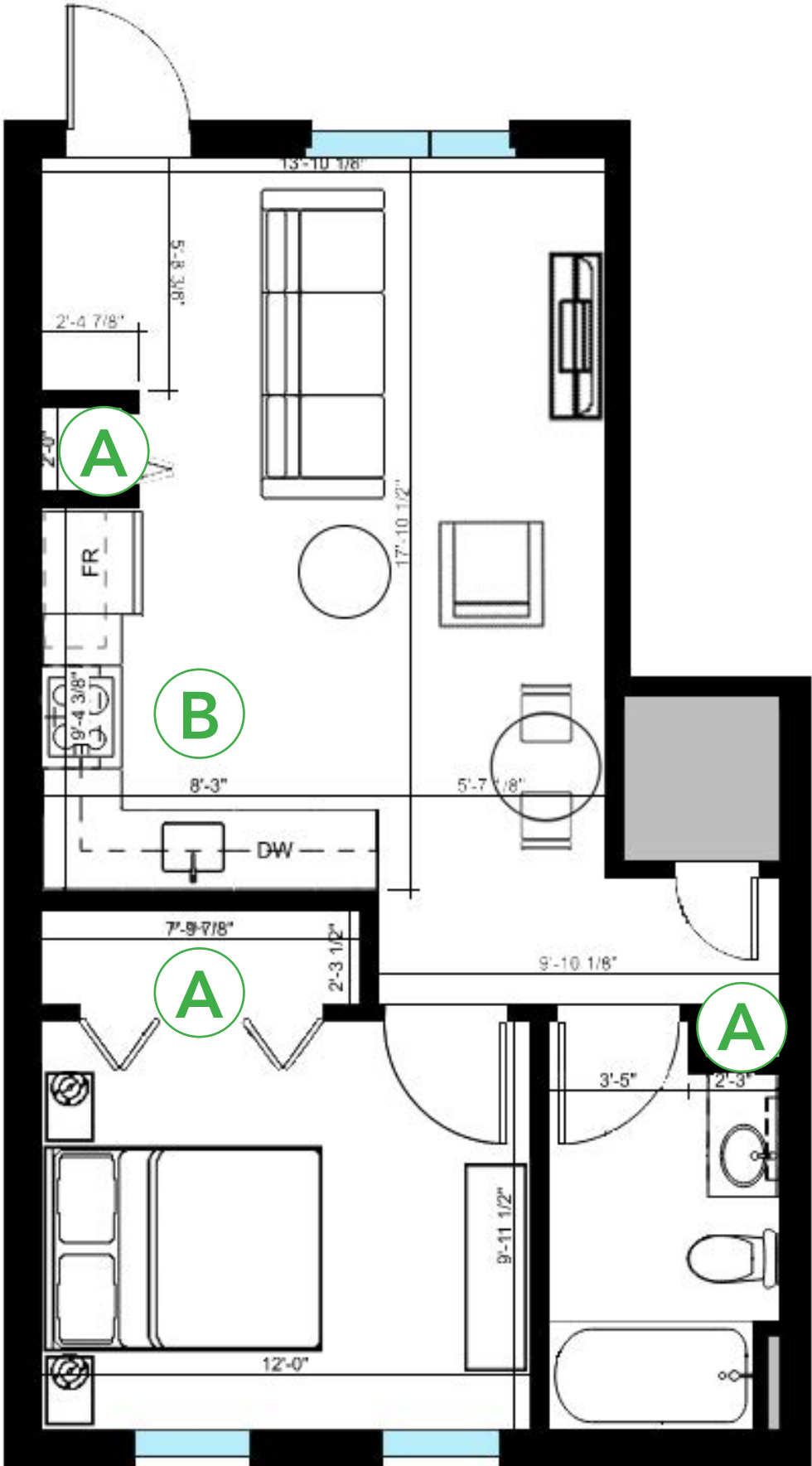


# Sample 1 Bed Floor Plan - Atypical Elongated Layout

Approx. 479 sqft (including closets)

This is a sample plan only. While there are elements we recommend incorporating into your design(s), POAH does not want this exact floor plan be used/duplicated in new construction projects. All square footages are approximate.

Floor Plan from POAH's Lambert Woods in Portland, ME

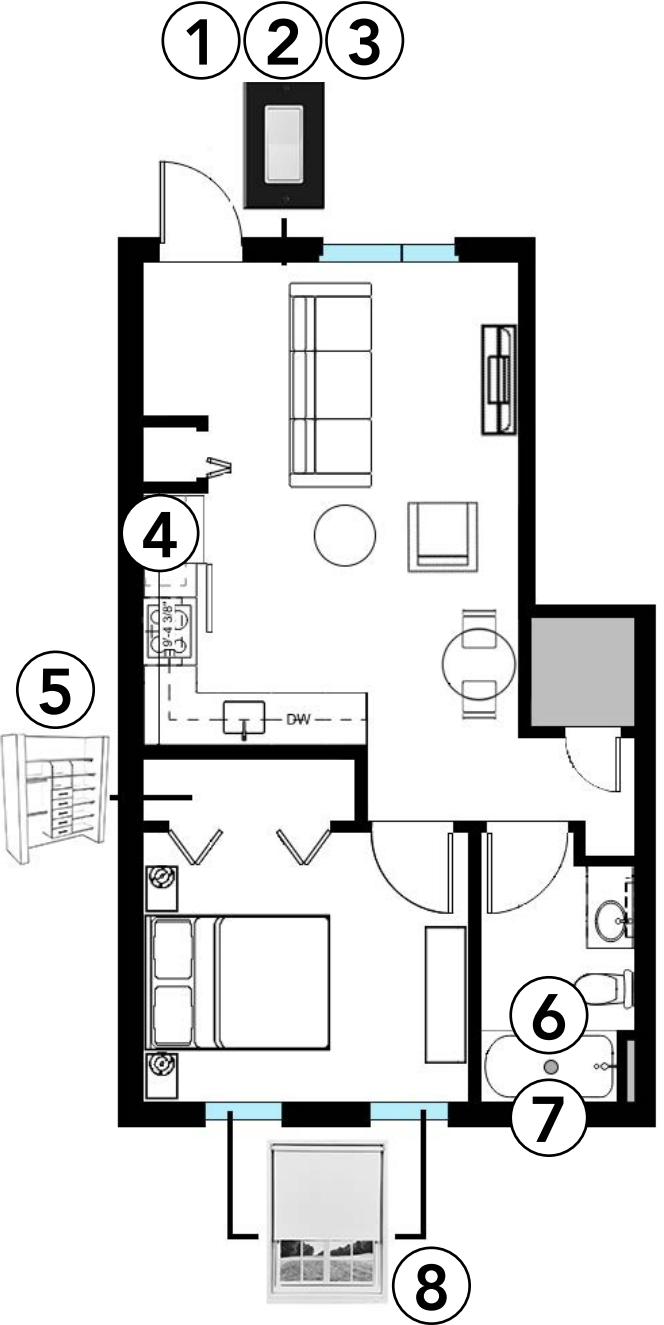


## What Works:

- A. There are (3) storage closets (3+ preferred by POAH).
- B. The kitchen is an L-Shape, which allows multiple people to easily work together and open appliances without impeding entry into the kitchen area.

## POAH's Human-Centered Design Criteria:

1. **Choice:** Bedroom(s) and living room have dimmable or adjustable lighting.
2. **Visibility:** The color of the light switch plates and/or door frames contrasts with the surrounding wall.
3. **Lighting:** All artificial lighting has a color rendering index (CRI) of at least 90 CRI in senior properties and 80 CRI in all other properties.
4. **Inclusive Design:** Refrigerators are positioned such that door(s) can swing open 180 degrees.
5. **Inclusive Design:** In closets, there are storage/shelving options at varying heights.
6. **Comfort:** Bathroom shower curtain rods are curved to created a more spacious feel.
7. **Lighting:** In the bathroom, there is a light above or directly adjacent to the bath/shower to avoid dimness after closing the shower curtain.
8. **Choice:** Bedroom(s) and living room have adjustable curtains, blinds, or window shades.
9. **Connection to Nature:** Natural materials or materials that evoke nature are used within the design (ex. wood finishes, stone, etc.) (Not Shown in This Plan).



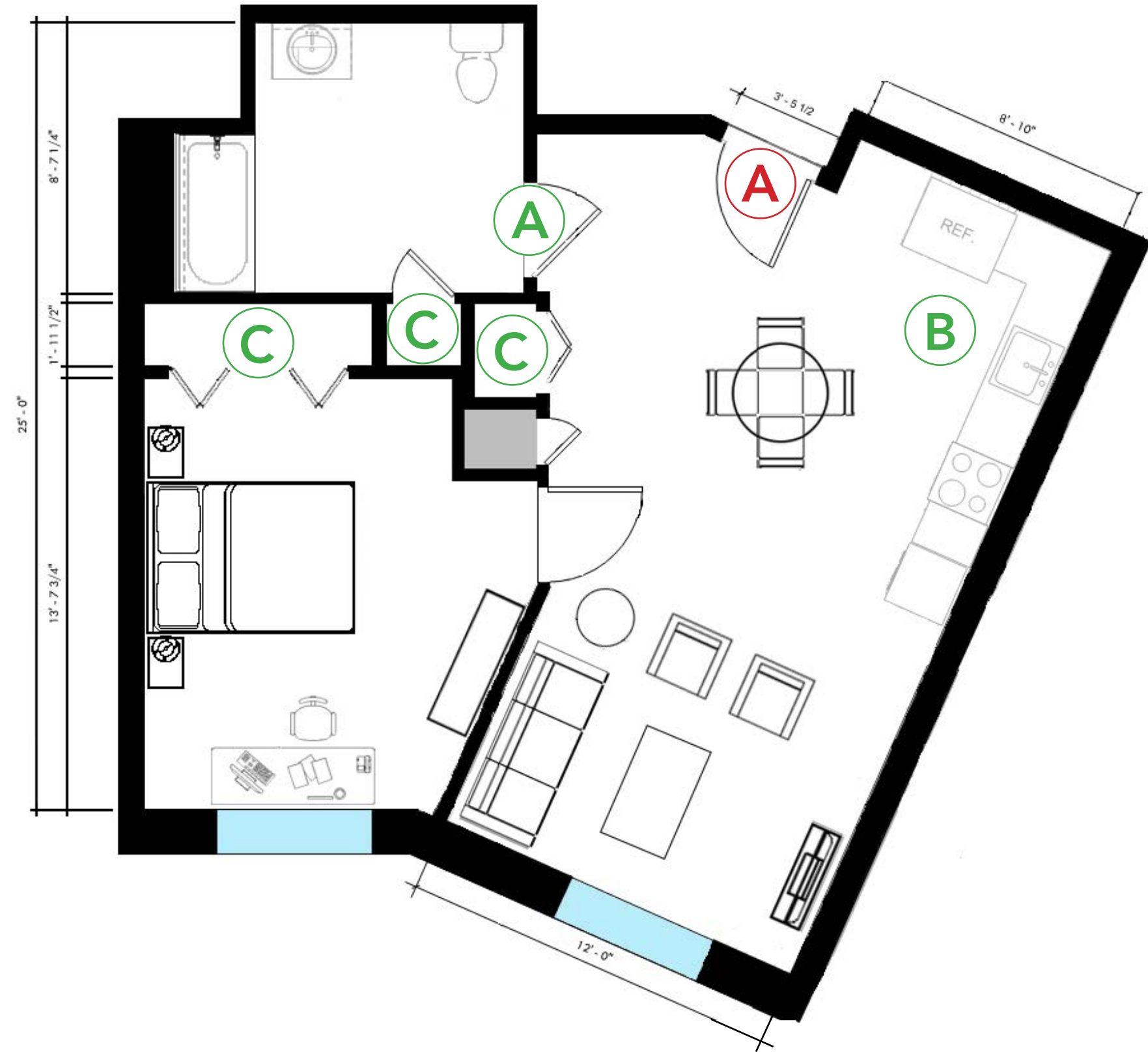


# Sample 1 Bed Floor Plan - Atypical Angled Layout

Approx. 609 sqft (including closets)

This is a sample plan only. While there are elements we recommend incorporating into your design(s), POAH does not want this exact floor plan be used/duplicated in new construction projects. All square footages are approximate.

Floor Plan from POAH's The Kenzi at Bartlett Station in Boston, MA



## What Works:

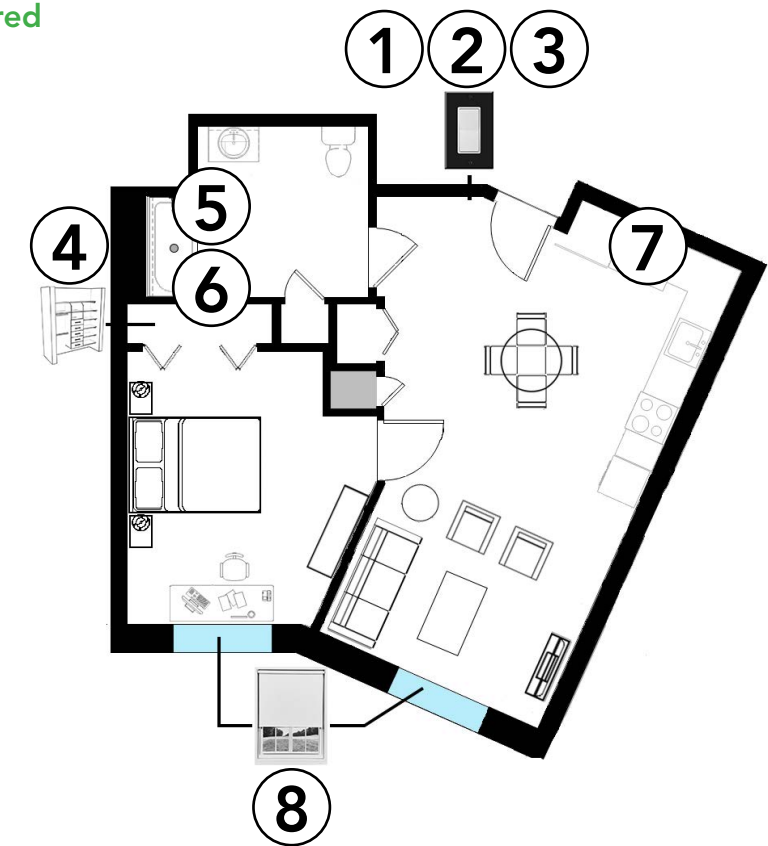
- A. The bathroom door swings out, providing more space within the room.
- B. The kitchen is an L-Shape, which allows multiple people to easily work together and open appliances without impeding entry into the kitchen area.
- C. There are (3) storage closets (3+ preferred by POAH).

## What Does Not Work:

- A. Given the door's current swing direction, the sightline(s) into the unit is more towards the bathroom door/wall(s) rather than the common spaces.  
*Possible Solution: Reverse the door swing.*

## POAH's Human-Centered Design Criteria:

1. **Choice:** Bedroom(s) and living room have dimmable or adjustable lighting.
2. **Visibility:** The color of the light switch plates and/or door frames contrasts with the surrounding wall.
3. **Lighting:** All artificial lighting has a color rendering index (CRI) of at least 90 CRI in senior properties and 80 CRI in all other properties.
4. **Inclusive Design:** In closets, there are storage/shelving options at varying heights.
5. **Comfort:** Bathroom shower curtain rods are curved to create a more spacious feel.
6. **Lighting:** In the bathroom, there is a light above or directly adjacent to the bath/shower to avoid dimness after closing the shower curtain.
7. **Inclusive Design:** Refrigerators are positioned such that door(s) can swing open 180 degrees.
8. **Choice:** Bedroom(s) and living room have adjustable curtains, blinds, or window shades.
9. **Connection to Nature:** Natural materials or materials that evoke nature are used within the design (ex. wood finishes, stone, etc.) (Not Shown in This Plan).

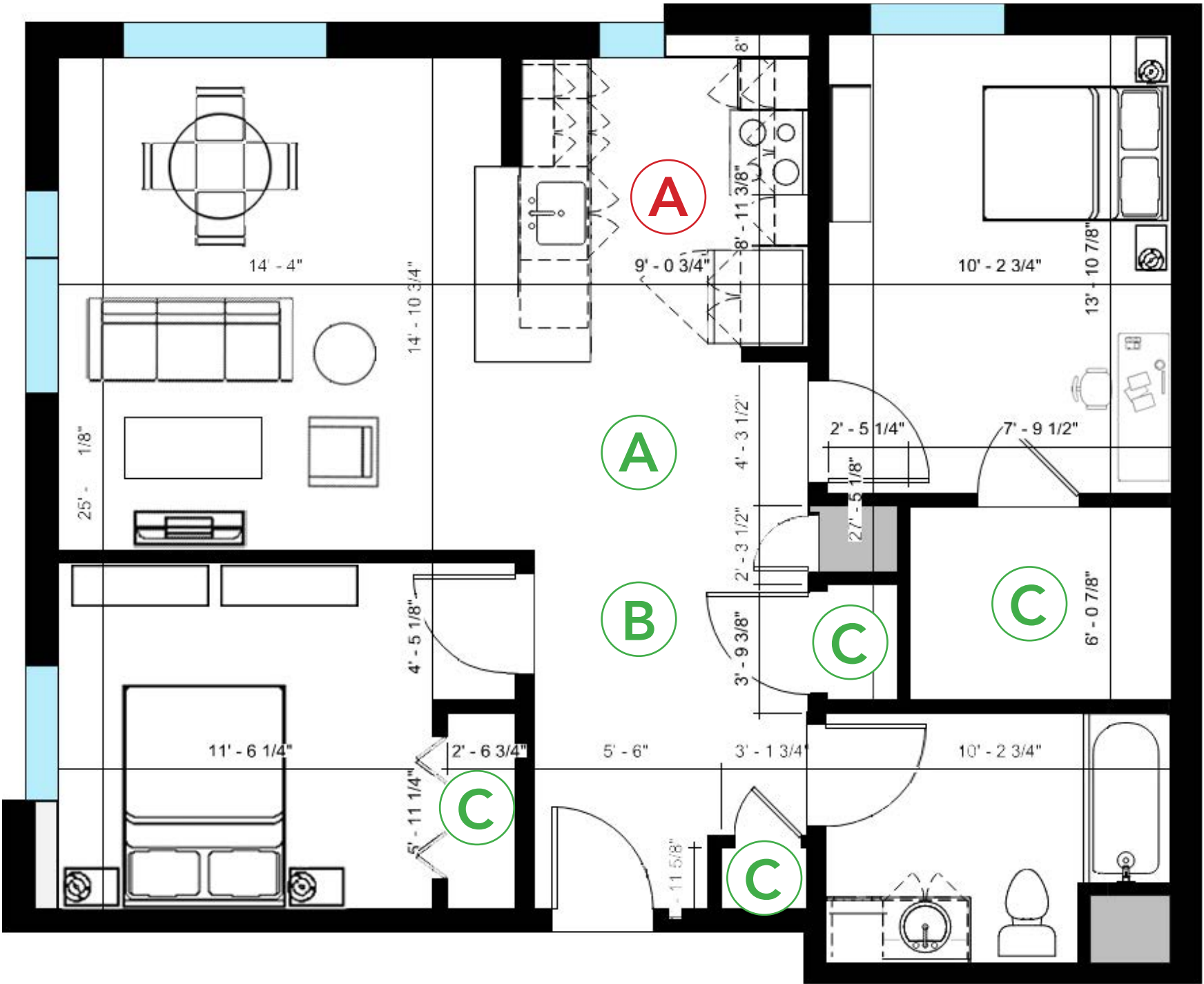


# Sample 2 Bed Floor Plan - Typical Square Layout

Approx. 795 sqft (including closets)

This is a sample plan only. While there are elements we recommend incorporating into your design(s), POAH does not want this exact floor plan be used/duplicated in new construction projects. All square footages are approximate.

Floor Plan from POAH's The Loop at Mattapan Station in Boston, MA



### What Works:

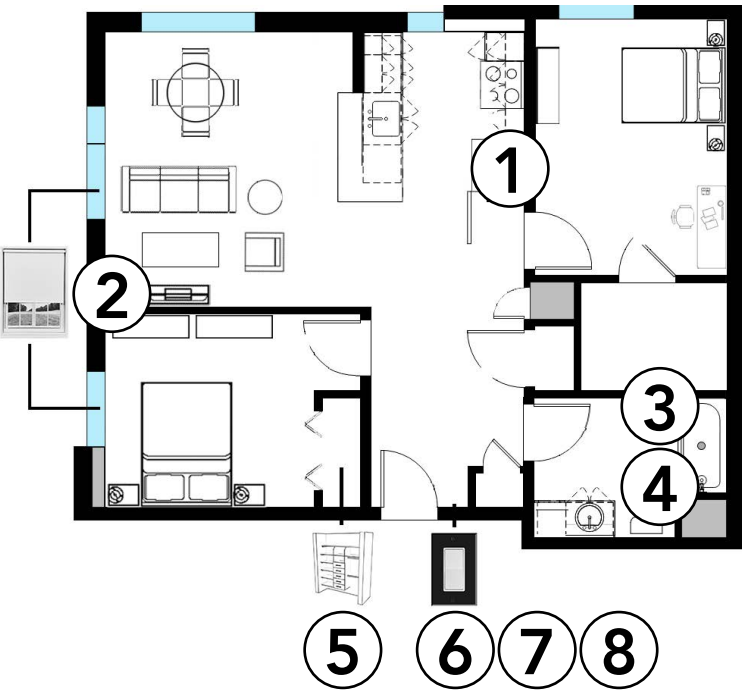
- A. There are no narrow, long corridors or blind corners within the unit.
- B. The entry corridor is more than 60" in width (preferred by POAH).
- C. There are (4) storage closets (3+ preferred by POAH).

### What Does Not Work:

- A. The kitchen is a U-Shape, which does not allow multiple people to easily work together. Additionally, opening appliance doors may impede entry into the kitchen.  
*Possible Solution: Provide an L-Shape kitchen instead.*

### POAH's Human-Centered Design Criteria:

1. **Inclusive Design:** Refrigerators are positioned such that door(s) can swing open 180 degrees.
2. **Choice:** Bedroom(s) and living room have adjustable curtains, blinds, or window shades.
3. **Comfort:** Bathroom shower curtain rods are curved to create a more spacious feel.
4. **Lighting:** In the bathroom, there is a light above or directly adjacent to the bath/shower to avoid dimness after closing the shower curtain.
5. **Inclusive Design:** In closets, there are storage/shelving options at varying heights.
6. **Choice:** Bedroom(s) and living room have dimmable or adjustable lighting.
7. **Visibility:** The color of the light switch plates and/or door frames contrasts with the surrounding wall.
8. **Lighting:** All artificial lighting has a color rendering index (CRI) of at least 90 CRI in senior properties and 80 CRI in all other properties.
9. **Connection to Nature:** Natural materials or materials that evoke nature are used within the design (ex. wood finishes, stone, etc.) (Not Shown in This Plan).



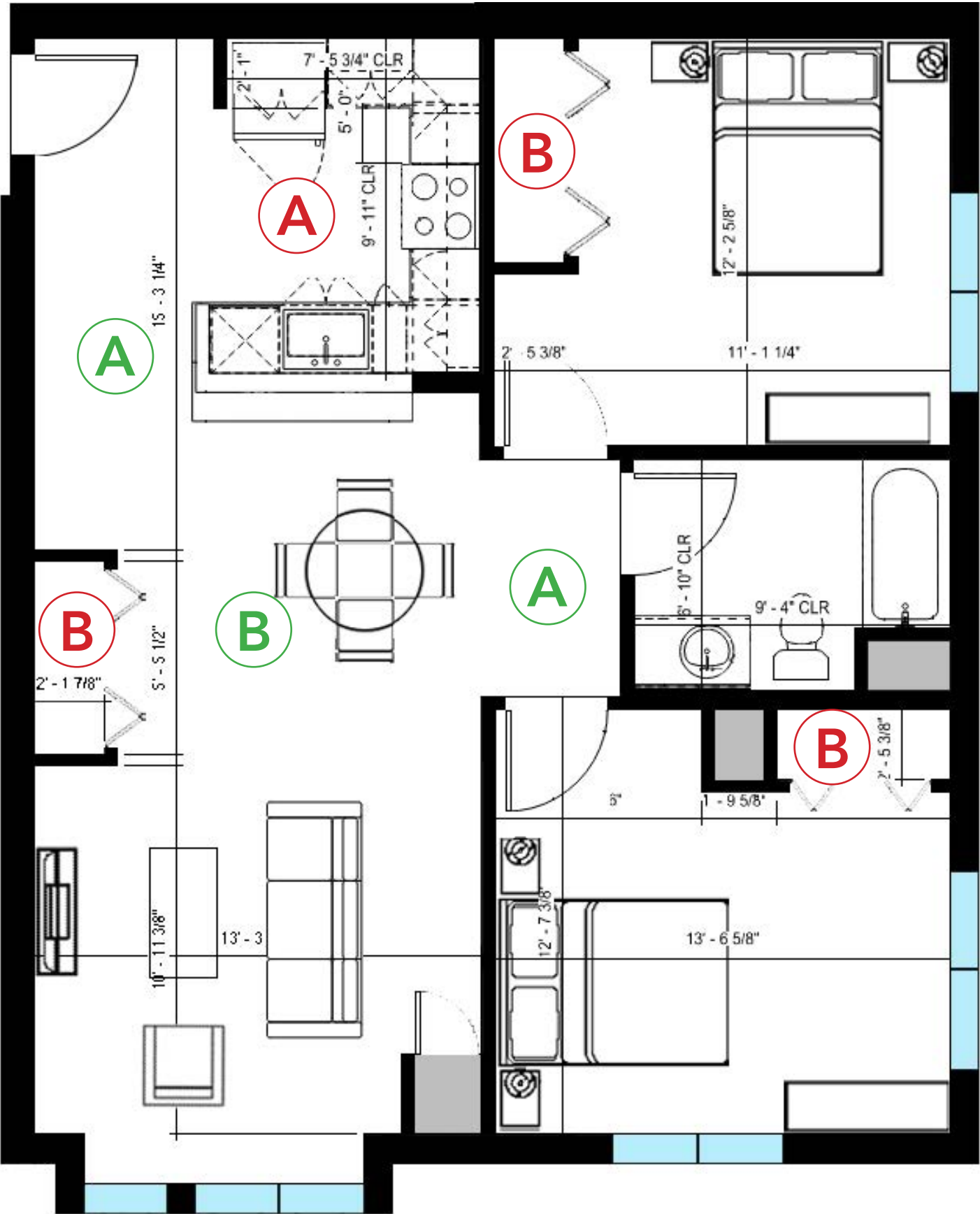


# Sample 2 Bed Floor Plan - Typical Rectangular Layout

Approx. 848 sqft (including closets)

This is a sample plan only. While there are elements we recommend incorporating into your design(s), POAH does not want this exact floor plan be used/duplicated in new construction projects. All square footages are approximate.

Floor Plan from POAH's Flat 9 at Whittier in Boston, MA



### What Works:

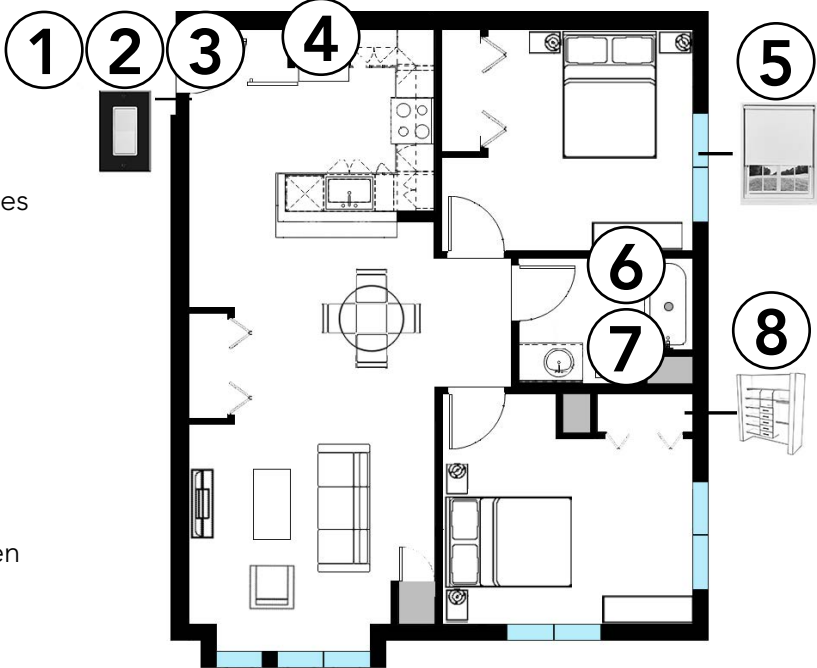
- A. There are no narrow, long corridors or blind corners within the unit.
- B. The corridor areas are more than 60" in width (preferred by POAH).

### What Does Not Work:

- A. The kitchen is a U-Shape, which does not allow multiple people to easily work together. Additionally, opening appliance doors may impede entry into the kitchen.  
*Possible Solution: Provide an L-Shape kitchen instead.*
- B. There is only (1) storage closet provided outside of the bedrooms. (POAH prefers 1 coat closet, 1 linen closet, and 1+ storage closet in the bedroom(s)).

### POAH's Human-Centered Design Criteria:

1. **Choice:** Bedroom(s) and living room have dimmable or adjustable lighting.
2. **Visibility:** The color of the light switch plates and/or door frames contrasts with the surrounding wall.
3. **Lighting:** All artificial lighting has a color rendering index (CRI) of at least 90 CRI in senior properties and 80 CRI in all other properties.
4. **Inclusive Design:** Refrigerators are positioned such that door(s) can swing open 180 degrees.
5. **Choice:** Bedroom(s) and living room have adjustable curtains, blinds, or window shades.
6. **Comfort:** Bathroom shower curtain rods are curved to created a more spacious feel.
7. **Lighting:** In the bathroom, there is a light above or directly adjacent to the bath/shower to avoid dimness after closing the shower curtain.
8. **Inclusive Design:** In closets, there are storage/shelving options at varying heights.
9. **Connection to Nature:** Natural materials or materials that evoke nature are used within the design (ex. wood finishes, stone, etc.) (Not Shown in This Plan).

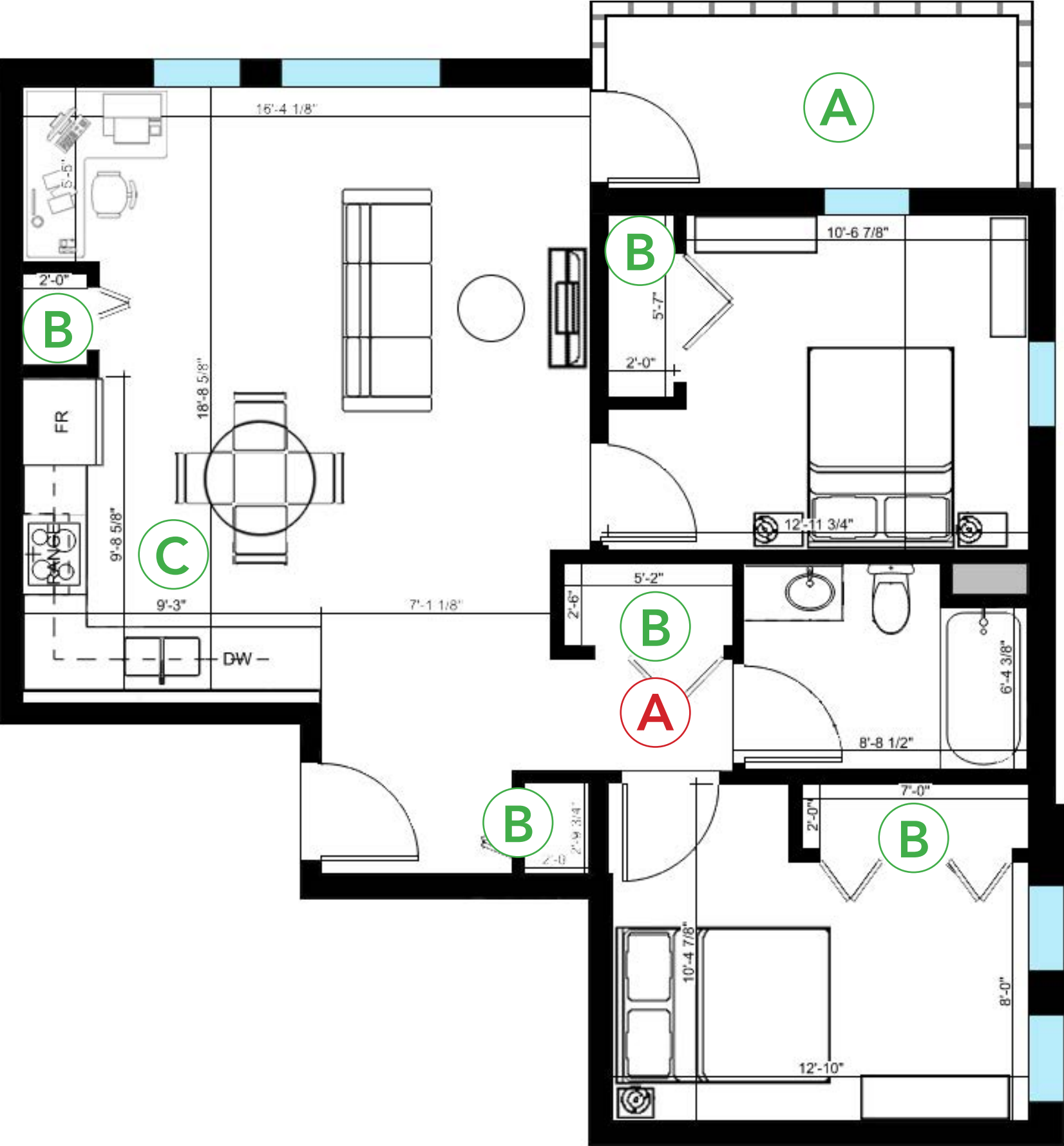


# Sample 2 Bed Floor Plan - Atypical Layout

Approx. 772 sqft (including closets)

This is a sample plan only. While there are elements we recommend incorporating into your design(s), POAH does not want this exact floor plan be used/duplicated in new construction projects. All square footages are approximate.

Floor Plan from POAH's Lambert Woods in Portland, ME



### What Works:

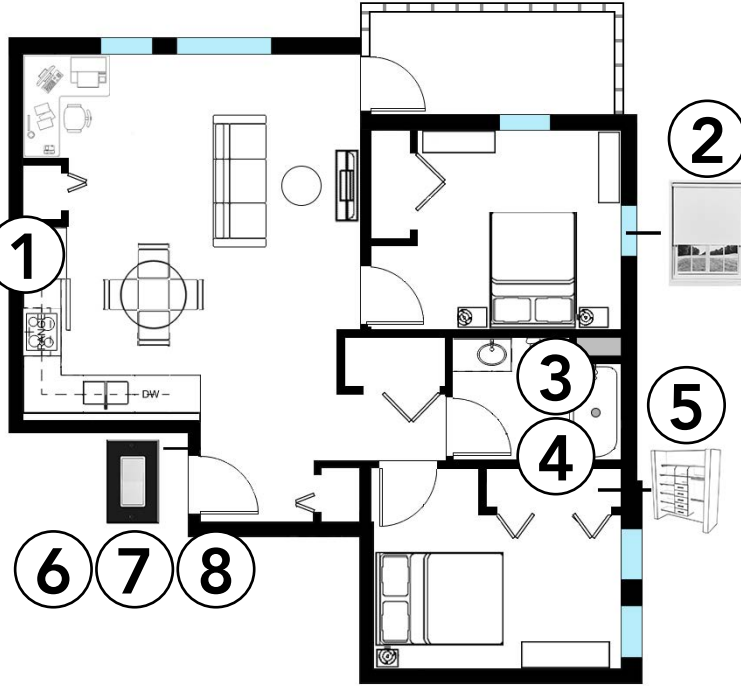
- A. There is a balcony, which provides private, personal outdoor space.
- B. There are (5) storage closets (3+ preferred by POAH).
- C. The kitchen is an L-Shape, which allows multiple people to easily work together and open appliances without impeding entry into the kitchen area.

### What Does Not Work:

- A. The corridor leading to the bathroom is less than 60" minimum in width (preferred by POAH).  
*Possible Solution:* Reduce the depth of the linen closet and/or secondary bedroom to provide a wider corridor.

### POAH's Human-Centered Design Criteria:

1. **Inclusive Design:** Refrigerators are positioned such that door(s) can swing open 180 degrees.
2. **Choice:** Bedroom(s) and living room have adjustable curtains, blinds, or window shades.
3. **Comfort:** Bathroom shower curtain rods are curved to created a more spacious feel.
4. **Lighting:** In the bathroom, there is a light above or directly adjacent to the bath/shower to avoid dimness after closing the shower curtain.
5. **Inclusive Design:** In closets, there are storage/shelving options at varying heights.
6. **Choice:** Bedroom(s) and living room have dimmable or adjustable lighting.
7. **Visibility:** The color of the light switch plates and/or door frames contrasts with the surrounding wall.
8. **Lighting:** All artificial lighting has a color rendering index (CRI) of at least 90 CRI in senior properties and 80 CRI in all other properties.
9. **Connection to Nature:** Natural materials or materials that evoke nature are used within the design (ex. wood finishes, stone, etc.) (Not Shown in This Plan).

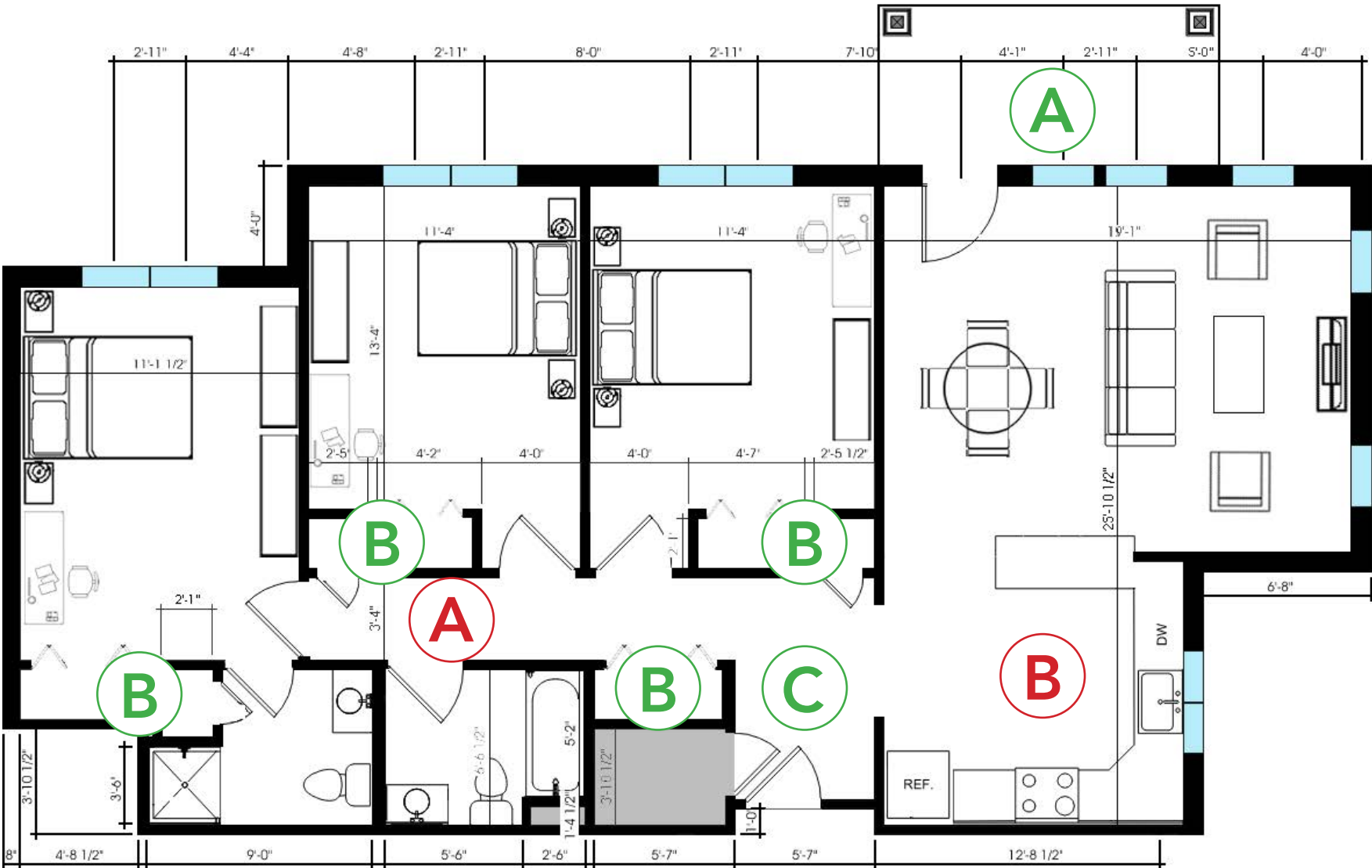


# Sample 3 Bed Floor Plan - Typical Horizontal Layout

Approx. 1,196 sqft (including closets)

This is a sample plan only. While there are elements we recommend incorporating into your design(s), POAH does not want this exact floor plan be used/duplicated in new construction projects. All square footages are approximate.

Floor Plan from POAH's Brewster Woods in Brewster, MA



### What Works:

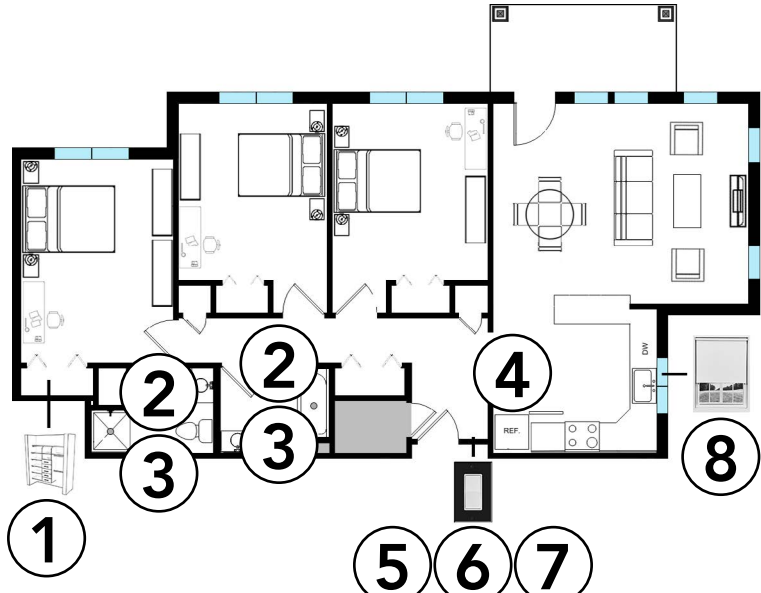
- A. There is a patio, which provides private, personal outdoor space.
- B. There are (7) storage closets (3+ preferred by POAH).
- C. The entry corridor is more than 60" in width (preferred by POAH).

### What Does Not Work:

- A. The corridor is less than 60" minimum in width (preferred by POAH).
- B. The kitchen is a U-Shape, which does not allow multiple people to easily work together. Additionally, opening appliance doors may impede entry into the kitchen.  
*Possible Solution: Provide an L-Shape kitchen instead.*

### POAH's Human-Centered Design Criteria:

1. **Inclusive Design:** In closets, there are storage/shelving options at varying heights.
2. **Comfort:** Bathroom shower curtain rods are curved to create a more spacious feel.
3. **Lighting:** In the bathroom, there is a light above or directly adjacent to the bath/shower to avoid dimness after closing the shower curtain.
4. **Inclusive Design:** Refrigerators are positioned such that door(s) can swing open 180 degrees.
5. **Choice:** Bedroom(s) and living room have dimmable or adjustable lighting.
6. **Visibility:** The color of the light switch plates and/or door frames contrasts with the surrounding wall.
7. **Lighting:** All artificial lighting has a color rendering index (CRI) of at least 90 CRI in senior properties and 80 CRI in all other properties.
8. **Choice:** Bedroom(s) and living room have adjustable curtains, blinds, or window shades.
9. **Connection to Nature:** Natural materials or materials that evoke nature are used within the design (ex. wood finishes, stone, etc.) (Not Shown in This Plan).



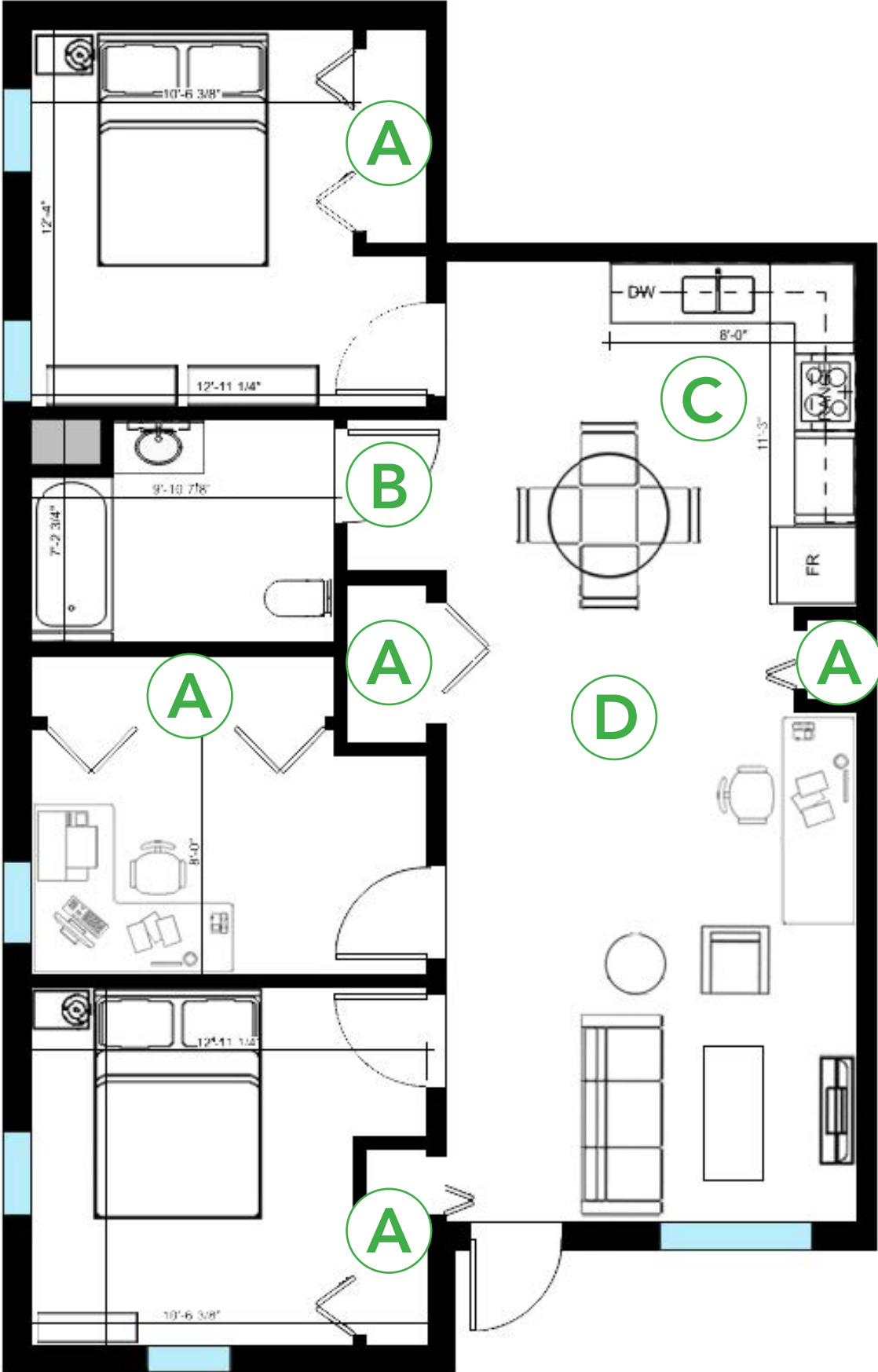


# Sample 3 Bed Floor Plan - Typical Vertical Layout

Approx. 932 sqft (including closets)

This is a sample plan only. While there are elements we recommend incorporating into your design(s), POAH does not want this exact floor plan be used/duplicated in new construction projects. All square footages are approximate.

Floor Plan from POAH's Lambert Woods in Portland, ME

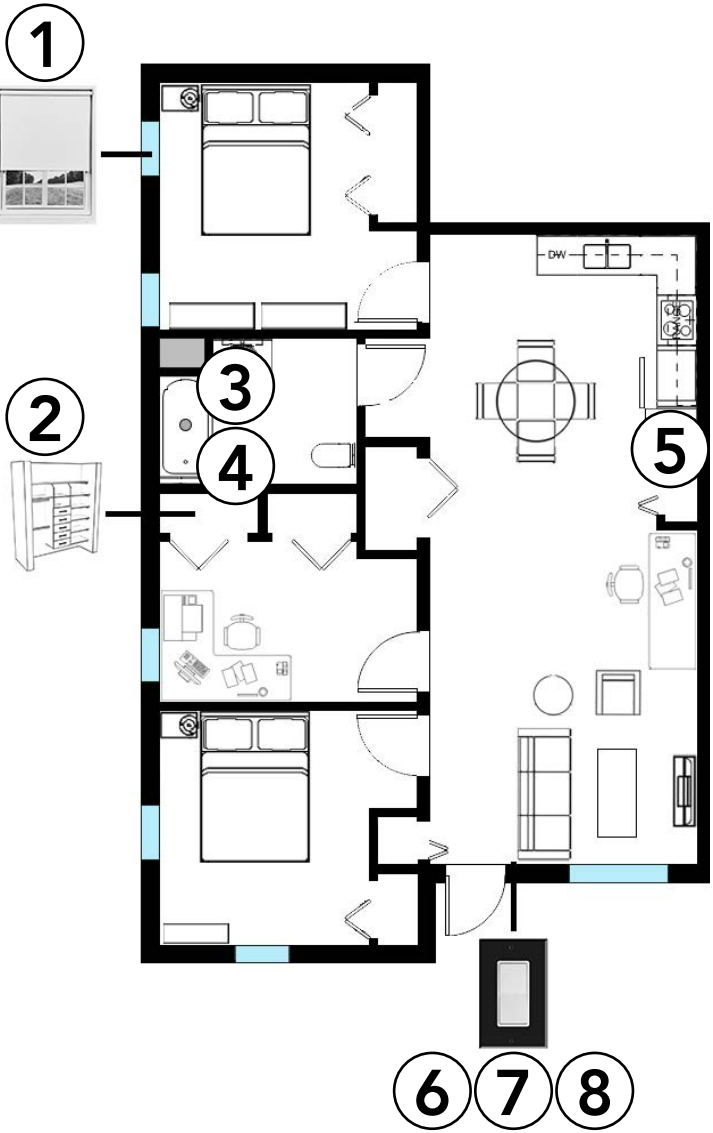


## What Works:

- A. The kitchen is an L-Shape, which allows multiple people to easily work together and open appliances without impeding entry into the kitchen area.
- B. There are no narrow, long corridors or blind corners within the unit.
- C. There are (7) storage closets (3+ preferred by POAH).
- D. The bathroom door swings out, providing more space within the room.

## POAH's Human-Centered Design Criteria:

1. **Choice:** Bedroom(s) and living room have adjustable curtains, blinds, or window shades.
2. **Inclusive Design:** In closets, there are storage/shelving options at varying heights.
3. **Comfort:** Bathroom shower curtain rods are curved to create a more spacious feel.
4. **Lighting:** In the bathroom, there is a light above or directly adjacent to the bath/shower to avoid dimness after closing the shower curtain.
5. **Inclusive Design:** Refrigerators are positioned such that door(s) can swing open 180 degrees.
6. **Choice:** Bedroom(s) and living room have dimmable or adjustable lighting.
7. **Visibility:** The color of the light switch plates and/or door frames contrasts with the surrounding wall.
8. **Lighting:** All artificial lighting has a color rendering index (CRI) of at least 90 CRI in senior properties and 80 CRI in all other properties.
9. **Connection to Nature:** Natural materials or materials that evoke nature are used within the design (ex. wood finishes, stone, etc.) (Not Shown in This Plan).

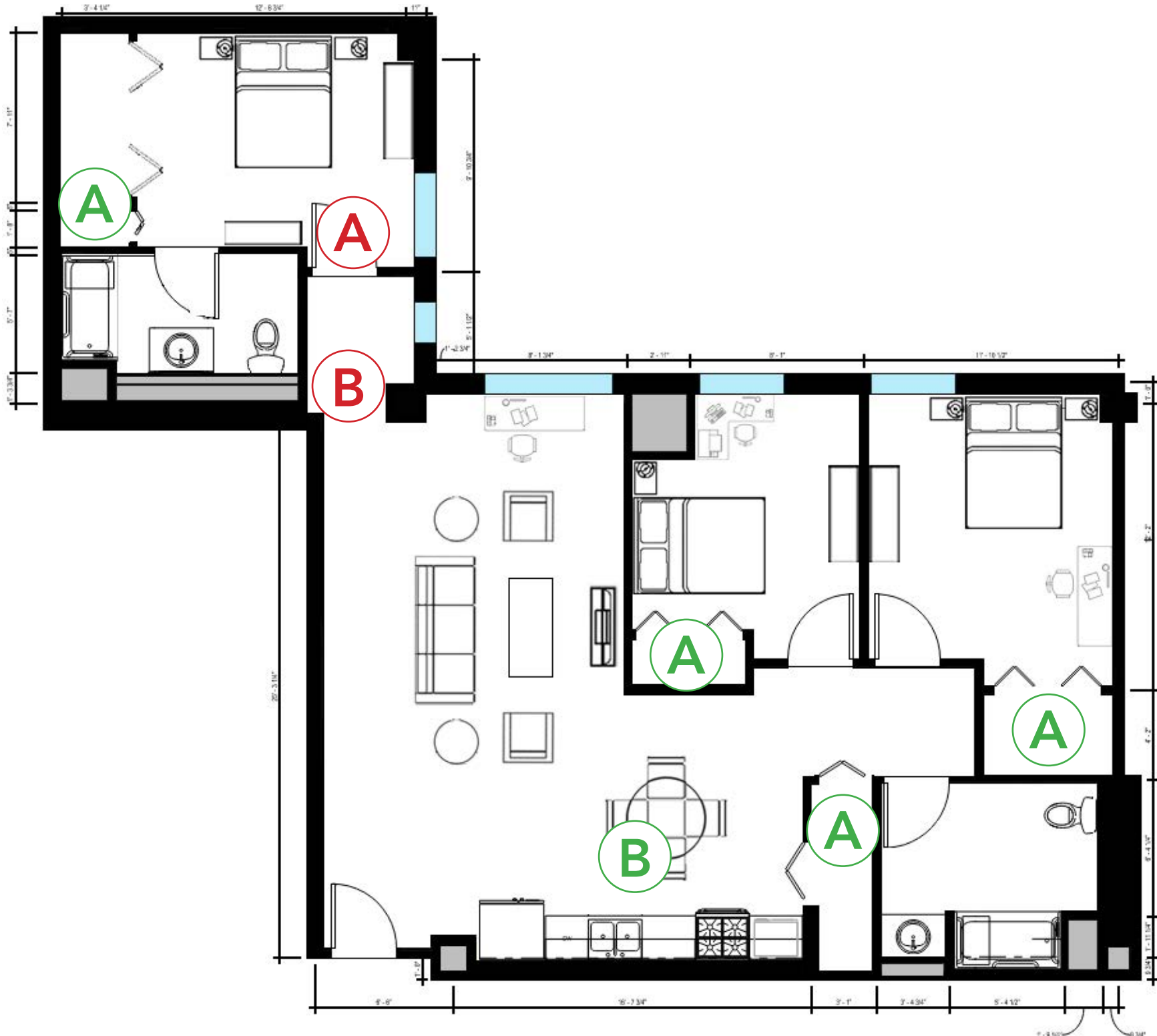


# Sample 3 Bed Floor Plan - Atypical Layout

Approx. 1,179 sqft (including closets)

This is a sample plan only. While there are elements we recommend incorporating into your design(s), POAH does not want this exact floor plan be used/duplicated in new construction projects. All square footages are approximate.

Floor Plan from POAH's Woodlawn Station in Chicago, IL



### What Works:

- A. There are (6) storage closets (3+ preferred by POAH).
- B. The kitchen is a galley, which allows multiple people to easily work together and open appliances without impeding entry into the kitchen area.

### What Does Not Work:

- A. Given the door's current swing direction, the sightline(s) into the primary bedroom is towards the wall rather than the main space.  
*Possible Solution: Reverse the door swing.*
- B. The corridor leading to the primary bedroom is less than 60" minimum in width (preferred by POAH).

### POAH's Human-Centered Design Criteria:

1. **Inclusive Design:** In closets, there are storage/shelving options at varying heights.
2. **Comfort:** Bathroom shower curtain rods are curved to create a more spacious feel.
3. **Lighting:** In the bathroom, there is a light above or directly adjacent to the bath/shower to avoid dimness after closing the shower curtain.
4. **Choice:** Bedroom(s) and living room have adjustable curtains, blinds, or window shades.
5. **Choice:** Bedroom(s) and living room have dimmable or adjustable lighting.
6. **Visibility:** The color of the light switch plates and/or door frames contrasts with the surrounding wall.
7. **Lighting:** All artificial lighting has a color rendering index (CRI) of at least 90 CRI in senior properties and 80 CRI in all other properties.
8. **Inclusive Design:** Refrigerators are positioned such that door(s) can swing open 180 degrees.
9. **Connection to Nature:** Natural materials or materials that evoke nature are used within the design (ex. wood finishes, stone, etc.) (Not Shown in This Plan).

